



Search



EN

Elevate

Tower fan

User manual

Original user manual, written in the English language

1. Preface

Thank you for choosing Duux.

At Duux we believe in the importance of a comfortable and healthy living environment.

Enhancing your wellbeing by designing appealing, functional and effective products is the passion that drives us every day.

With our range of innovative air treatment products we aim to provide you with the best possible indoor air quality.

Feel the perfect breeze at home with Elevate, designed to effortlessly cool every corner with elegance and power.

So when the heat rises, set your ideal temperature and relax in the refreshing breeze.

2. About this manual

Make sure you have fully read and understood the instructions in this document before installing or using the product. Keep this document for future reference.

2.1. Language

This manual is originally written in English. All other languages are translations of the original English manual.

3. Product overview

3.1. Intended use

This product is intended for circulating air in a room.

This product is intended for indoor use only.

This product is intended for normal household use only. This product is not intended for use in commercial or industrial environments.

This product is not intended for use by persons (including children) with reduced physical, sensory or mental capabilities, or lack of experience and knowledge, unless they have been given supervision or instruction concerning use of the appliance by a person responsible for their safety.

Any adjustments to the product may affect the safety, warranty, and correct operation.

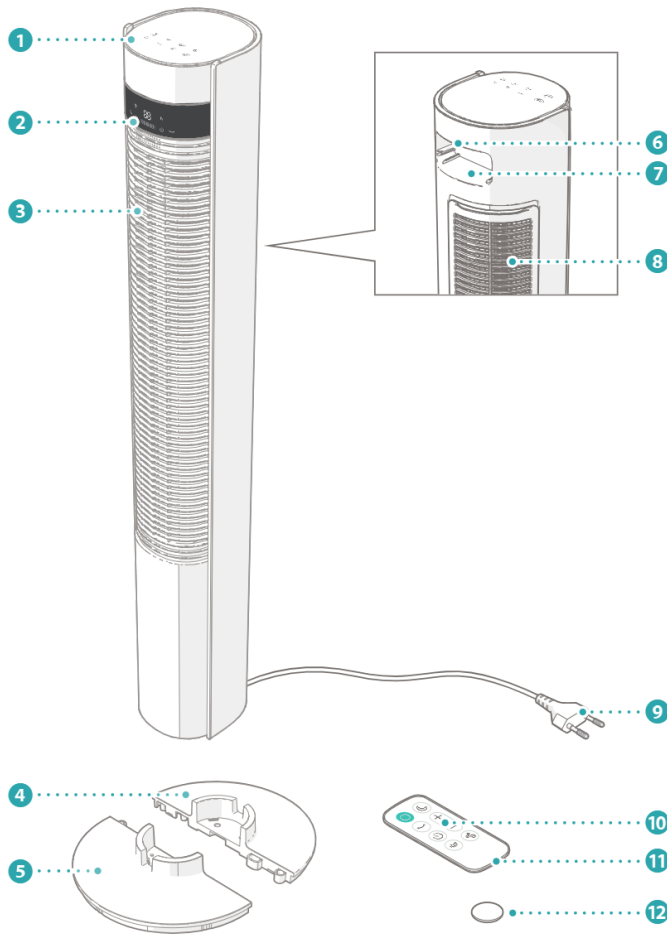
3.2. Product description

The Elevate is a cooling fan that allows you to control the temperature of a room.

The product has different air-cooling functions which provide the user with multiple possibilities suited for their needs.

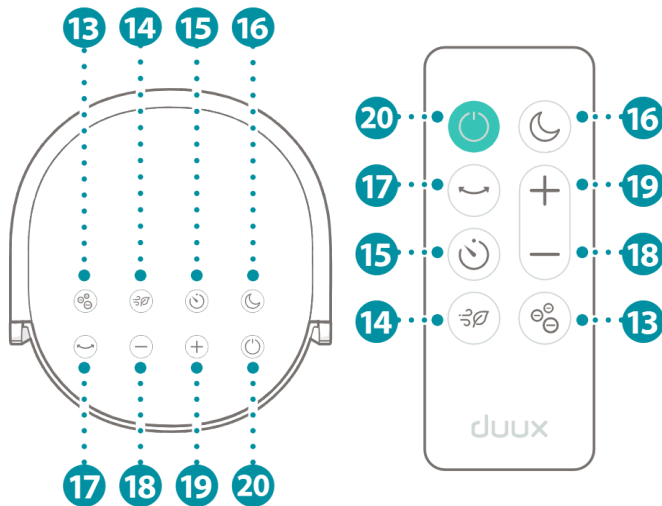
Choose from 12 fan speed settings with or without oscillation.

3.3. Main parts



- 1 Interaction panel
- 2 Display panel
- 3 Front grille
- 4 Base part 1
- 5 Base part 2
- 6 Carrying handle
- 7 Remote storage
- 8 Rear grille
- 9 Power cable
- 10 Remote control
- 11 Battery compartment
- 12 CR2032 button cell battery

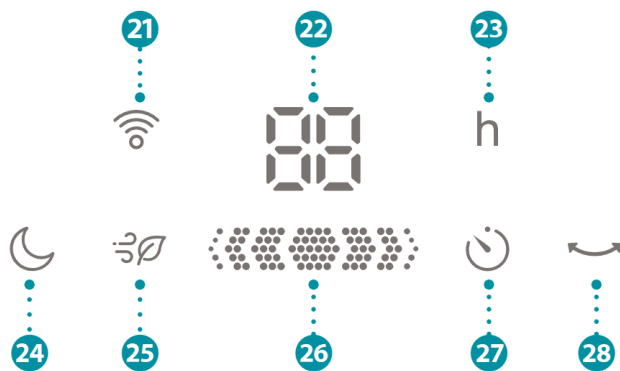
3.4. Controls



- 13 Ionizer*
- 14 Natural wind mode
- 15 Timer
- 16 Night mode
- 17 Horizontal swing
- 18 Speed down
- 19 Speed up
- 20 On/off button

*Not available for model numbers DXTF30 and DXTF31

3.5. Display



- 21 Wi-Fi indicator **
- 22 Number display
- 23 Timer hour indicator
- 24 Night mode indicator
- 25 Natural wind mode indicator
- 26 Ionizer mode indicator
- 27 Timer indicator
- 28 Horizontal swing indicator



**Only available for model numbers DXTF10, DXTF11, DXTF12, DXTF10UK and DXTF910UK

4. Safety instructions

4.1. Signal words in this manual

Signal words provide information on the level of risk of the described hazardous situation.





The following signal words are used in this manual:

Symbol	Meaning
 WARNING	This symbol indicates a hazardous situation which, if not avoided, could result in death or serious injury.
 CAUTION	This symbol indicates a hazardous situation which, if not avoided, could result in minor or moderate injury.
NOTICE	This symbol is used to address practices not related to physical injury.

4.2. Symbols on the product

Symbols on the product provide information about the product.

The following symbols can be found on the product:

Symbol	Meaning
	The product features CE marking to demonstrate conformity to all relevant European directives.
	The product features UKCA marking to demonstrate conformity to all relevant United Kingdom directives.
	The European directive 2012/19/CE on Waste Electrical and Electronic Equipment (WEEE) requires that old household electrical appliances must not be disposed in the normal unsorted municipal waste stream.
	Make sure you have fully read and understood the instructions in this document before installing or using the product.

4.3. Safety warnings and regulations

Risk of electric shock:

- Never perform any maintenance with the product connected to the power source. Disconnect the product from the power source before service and when cleaning the product.
- Never open the product yourself for maintenance. This product may only be opened for maintenance by an authorised technician.
- Never immerse the product in water or other liquids. Follow the cleaning instructions of this manual for the correct performance of maintenance.
- Never handle the product with wet hands. Only handle the product with dry hands.
- Never use the product in a humid environment. Always use the product in a clean and dry environment.

Risk of fire:

- Never use the product with a programmer, timer, separate remote-control system, or any other device that switches the product on automatically.
- Never use the product if there are visible signs of damage to the product. Return a damaged product to the nearest authorised service point for examination, repair, or adjustment.
- Never cover the product. Objects may block openings. Keep the space around the product free from objects.
- Never use an extension cord. Only use the product on a direct power source.
- Never let the product or power cord become dusty. Regularly clean the product and power cord from dust.
- Never use sockets that do not match the power voltage of the product. Before using the product, check the voltage on rating plate of the product. Only connect the product to sockets that match the voltage of the product.

Risk of chemical burns:

- Always keep battery(s), both full and empty, out of reach of children to avoid the chance of swallowing. Dispose used battery(s) immediately and safely. Seek immediate medical attention when you suspect that battery(s) have been swallowed.
- Always avoid eye or skin contact with the battery acid in event of a leaking battery. In case of contact with the battery acid, immediately flush the eyes or skin with water. Consult a doctor immediately.

Risk of explosion:

- Never use the product near flammable or explosive substances or fuels. Flammable or explosive substances or fuels may cause an explosion. Only use the product in a clean and well-ventilated area.
- Never expose battery(s) to heat, fire, or direct sunlight.

Risk of cutting:

- Never use the product when the guard is removed or damaged.
- Always keep hands, fingers, hair, clothing, or jewellery away from the product during use.
- Never let children alone unattended with the product in use to ensure that they do not play with the product. Always supervise children when the product is in use.
- This product can be used by children aged from 8 years and above and persons with reduced physical, sensory or mental capabilities or lack of experience and knowledge if they have been given

hazards involved. Children shall not play with the appliance. Cleaning and user maintenance shall not be made by children without supervision.

Risk of suffocation:

- Never let children play with the packaging material. Keep the packaging material out of the reach of children.

⚠ CAUTION

Risk of snagging:

- Always use the product in an upright position on a stable and flat surface. Keep a minimum of 50 cm free space around the product.

Risk of falling:

- Never let the power cord hang over the edge of a table or counter. Someone could trip over the cord or accidentally pull the cord. Always place the power cord on a stable and flat surface.

NOTICE

Risk of short-circuiting:

- Always match the plus (+) and minus (-) markings on the battery with the plus (+) and minus (-) markings on the product when inserting the battery(s).
- Never mix cells of different manufacture, capacity, size or type within the product.
- Always remove the battery(s) from the product when the product is not used for a longer period of time.
- Always use the recommended battery type(s).

Risk of damaging the product:

- Never use any paint, cleaning sprays, anti-insect sprays, or similar near the product when the product is switched on.
- Never use the product in direct sunlight. Direct sunlight may damage the housing of the product.
- Never pull the power cord to disconnect it from the socket. Always grasp the plug and pull.
- Never use cleaning solvents or abrasives to clean the product. Using the wrong cleaning products may damage the housing of the product. Always use the correct cleaning method specified in this user manual.
- Always remove all the packaging before installing or using the product.
- Never mount the product on walls or ceilings.
- Always only use original accessories from the manufacturer.
- If the supply cord is damaged, it must be replaced by the manufacturer, its service agent or similarly qualified persons in order to avoid a hazard.

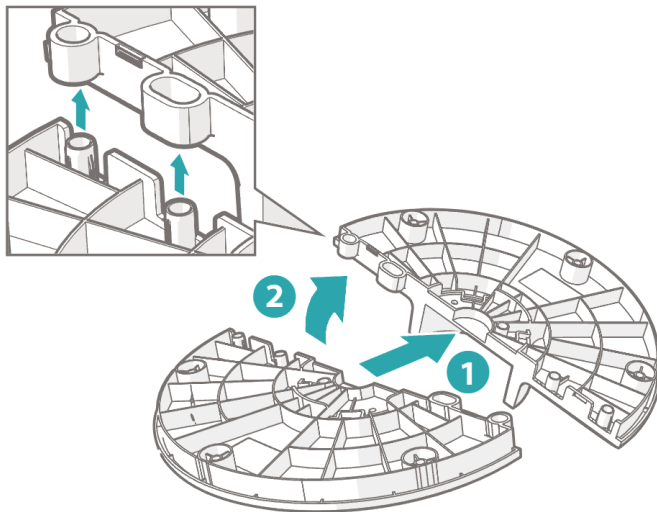
5. Installation

NOTICE

Risk of damaging the product:

- Always remove all the packaging before installing or using the product.

5.1. Installing the product



1. Connect the two halves of the base 4 5 by aligning them together and twisting.

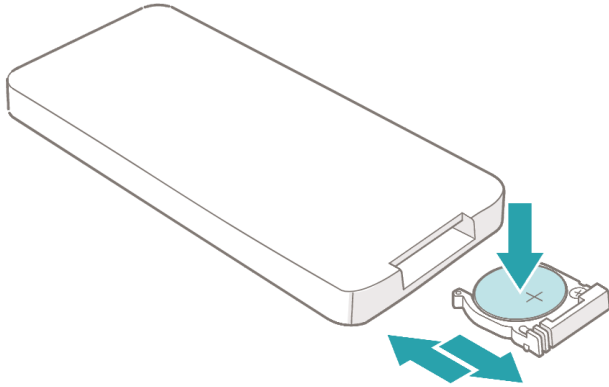


5.2. Installing the remote control

NOTICE

Risk of short-circuiting:

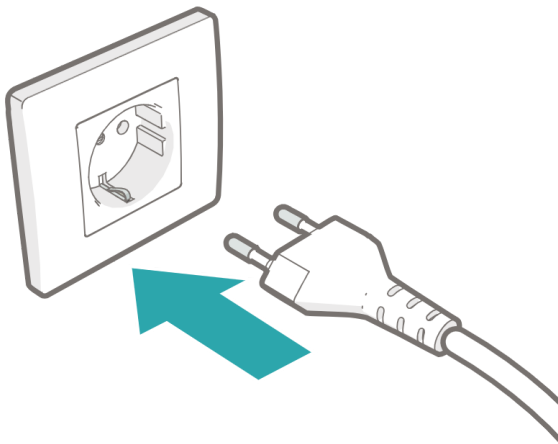
- Always match the plus (+) and minus (-) markings on the battery with the plus (+) and minus (-) markings on the product when inserting the battery(s).



1. Open the battery compartment 11.
2. Insert the CR2032 button cell battery 12.
3. Close the battery compartment 11.

6. Use

6.1. Switching on the product

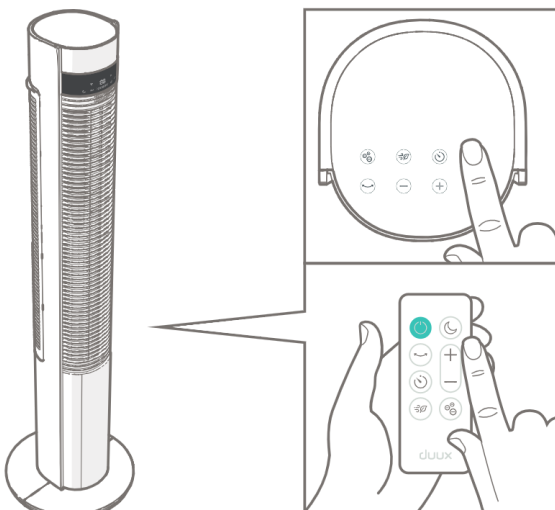


1. Connect the end of the power cable 9 to the base unit.
2. Connect the other end of the power cable 9 to a power outlet.








NOTICE

The product will beep when it is connected to power.

6.2. Using the product



1. Place the product upright on a stable and flat surface, at least 50 cm from other objects.
2. Press the power button **20** to switch on the product.
The product resumes the selected function or mode from previous use.
3. Press the increase **19** or decrease button **18** to change the fan speed.
4. Press on the buttons on the control panel or remote control to select the desired function or mode.

Icon	Function/mode	Description
	Ionizer	The product emits ionized particles to trap pollutants. When active, the following symbol is on. 
	Natural wind mode	The product produces variable wind speeds.
	Timer function	The product automatically switches off after the set time has passed.
	Night mode	The display switches off automatically after 10 seconds. Activating this mode does not affect the airflow speed or the product's noise level.
	Horizontal swing	The product oscillates horizontally.
	Wi-Fi indicator	The product is connected to Wi-Fi.

6.3. Switching off the product

1. Press the power button **20** to switch off the product.
2. Remove the power cable **9** from the power outlet.

7. Maintenance

⚠ WARNING

Risk of electric shock:

- Never perform any maintenance with the product connected to the power source. Disconnect the product from the power source before service and when cleaning the product.
- Never immerse the product in water or other liquids. Follow the cleaning instructions of this manual for the correct performance of maintenance.

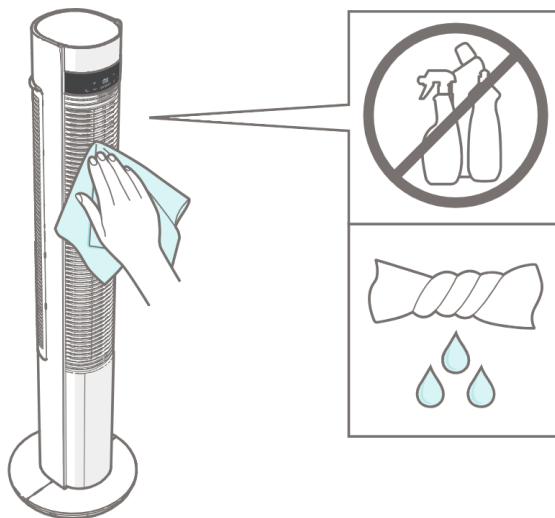
NOTICE

Risk of damaging the product:

- Never use cleaning solvents or abrasives to clean the product. Using the wrong cleaning products may damage the housing of the product. Always use the correct cleaning method specified in this user manual.

7.1. Cleaning

Clean the product every 3 months.



1. Clean the outside of the product with a soft, slightly damp cloth.

7.1.1. Cleaning the rotor

1. Remove the screw from the rear grille **8**.
2. Slide out the grille by moving it upwards and outwards.

7.2. Storing

When the product is not used for multiple months, clean all the parts.

Remove the CR2032 button cell battery  from the remote control .

Store the product in the original packaging and keep in a clean, dry place.

7.3. Spare parts

WARNING

Risk of electric shock:

- Never open the product yourself for maintenance. This product may only be opened for maintenance by an authorised technician.
- Never perform any maintenance with the product connected to the power source. Disconnect the product from the power source before service and when cleaning the product.

Spare parts and accessories can be requested at a local distributor.

8. Warranty

Duux products have a 24-month guarantee from the time of purchase, provided that they are installed and maintained correctly as indicated in this user manual. Warranty will be void if the product has been improperly operated, stored or used other than described in this manual. This includes opening the device and water damage.

Claims under the guarantee must always be made via the supplier of your Duux product. Products with a defect caused by the production process and within the guarantee period after purchase will be assessed by Duux.

If you notice a defect, please first consult the user manual and the online FAQ at www.duux.com.

9. Disposal

If the product is defective, please contact your supplier. It may still be possible to repair the product. If you still need to dispose the product, please follow the local regulations.

Always remove the battery(s) from the product before disposal. Battery(s) may contain toxic heavy metals and meet the requirements of hazardous waste.

To prevent possible harm to the environment or human health from uncontrolled waste disposal, recycle the product responsibly to promote the sustainable reuse of material resources.

10. Technical specifications



Product name

Elevate



Model number

DXTF01/02/03/10/11/12/30/31/10UK/910UK



Measurements (d × w × h)

290 × 290 × 1100 mm



Weight

3.7 kg



Main materials

ABS, HIPS



Input power

220 - 240 VAC; 50 / 60 Hz



Noise level

13 - 56 dBA



Display

LED display

11. Simplified EU declaration of conformity

Hereby, Duux declares that this product complies with Low Voltage Directive 2014/35/EU. The full text of the EU Declaration of Conformity is available at the following internet address: www.duux.com/doc