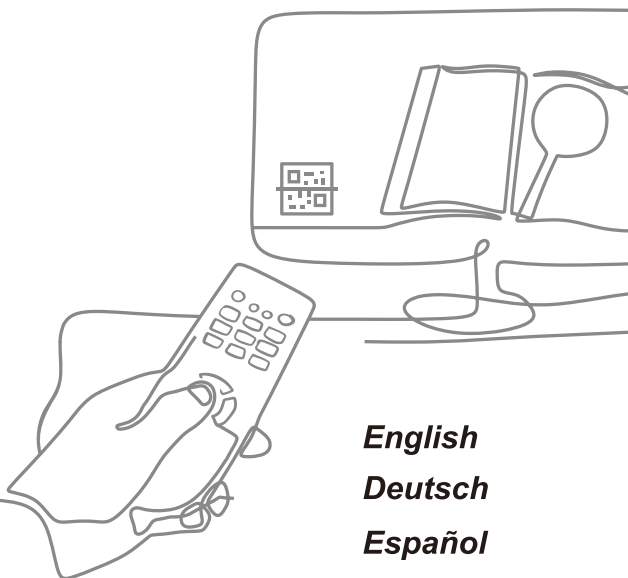


Hisense

USER MANUAL

Read the manual carefully and ensure you have fully understood its contents before operating this device for the first time.



English
Deutsch
Español
Italiano
Português
Français
Nederlands



20188571




Figures and illustrations in this manual are provided for reference only and may differ from actual product appearance.

Parts of the software function changes with the system upgrade.

Find the E-Manual

This TV is equipped with a user manual and embedded E-Manual (**Settings > Support > E-Manual**).

E-Manual support functions

 Search Find the help you are looking for.	 Try Now Go directly to the function page and try it.	 QR Code Scan to open the E-Manual on your mobile device.
---	--	--

Contents

Installation	1
Appearance and Connection	4
Remote Control	6
Specifications	8
Other Information.....	10

Accessories List


The following accessories are included with TV:


User Manual × 1	Power Cord × 1	Remote Control × 1	Screw × 8
Base Column × 2	Base Plate × 1	Warranty Card × 1	

NOTE

- The accessories may be different from the list above due to different models, countries / regions. Please refer to the actual accessory bag.

Important Notice

Paragraphs beginning with the symbol  indicate important instructions, tips or conditions for the following settings.

 **For your own safety and the optimal performance of your TV, ensure to read the safety instructions before performing any installation.**

Compatibility with 3rd party products, software and services are not guaranteed. We cannot be held liable for any damage or loss suffered whilst operating, using or connecting to incompatible devices or apps.

The recording and playback of content on this or any other device may require permission from the owner of the copyright or other such rights in that content. It is your responsibility to ensure that your use of this or any other device complies with applicable copyright legislation in your country. Please refer to that legislation for more information on the relevant laws and regulations involved or contact the owner of the rights of the content you wish to record or playback.

Read these instructions
Follow all instructions
Heed all warnings
Keep these instructions

All rights reserved.

Hereby, Hisense Visual Technology Co., Ltd. declares that the radio equipment type is in compliance with Directive 2014/53/EU and Radio Equipment Regulations 2017 of UK. Please enter the model name at the following internet address to read the full text of the declaration of conformity: <https://www.hisense.com/global/certificate-download.html>

Please refer to the rating label for TV model name and find Bluetooth remote control model name on the remote control or inside the remote control cover.

Authorized EU Representative

Name: Gorenje gospodinjnski aparati, d.o.o.



Address: Partizanska cesta 12, 3320 Velenje, Slovenija


Email: info@gorenje.com




Safety Instructions

To ensure safe and correct use of this product, always comply with the following precautions to avoid dangerous situations and damage to your unit:

	CAUTION RISK OF ELECTRIC SHOCK DO NOT OPEN	
CAUTION: TO REDUCE THE RISK OF ELECTRIC SHOCK, DO NOT REMOVE COVER (OR BACK). NO USER-SERVICEABLE PARTS INSIDE. REFER SERVICING TO QUALIFIED SERVICE PERSONNEL.		

 The lightning flash with arrowhead symbol, within an equilateral triangle is intended to alert the user to the presence of uninsulated dangerous voltage within the product's enclosure that may be of sufficient magnitude to constitute a risk of electric shock.

 The exclamation point within an equilateral triangle is intended to alert the user to the presence of important operating and maintenance (servicing) instructions in the literature accompanying the appliance.

The intended use and ambient conditions for this TV

This TV is intended for the rendering of video and audio signals, on a table-top or wall-mounted, in a home or office environment. It must not be used in rooms with a high level of humidity or dust concentration. The warranty is only valid if used as intended by the manufacturer.

WARNING

High humidity and dust concentration may lead to current leaks in the device. To reduce the risk of fire or electrical shock:

- Do not expose this unit to rain, moisture, dripping or splashing water, and do not place objects filled with liquids, such as vases, cups, etc. on or over the unit.
- Do not touch the TV with wet hands.
- Do not expose to direct air-conditioning and keep candles or other naked flames away from the TV at all times.

If the TV is moved from a cold environment to a hot environment, leave it switched off for at least an hour to avoid condensation. If used outside, make sure it is protected from moisture.

If you notice anything unusual, immediately remove the power plug.

In case of fire, use preferably a CO₂ gas or powder fire extinguisher. If such extinguishers are not accessible, try to isolate the electrical supply before using a water fire extinguisher.

WARNING

Stability Hazard

A television set may fall, causing serious personal injury

or death. Many injuries, particularly to children, can be avoided by taking simple precautions such as:

- ALWAYS use cabinets or stands or mounting methods recommended by the manufacturer of the television set.
- ALWAYS use furniture that can safely support the television set.
- ALWAYS ensure the television set is not overhanging the edge of the supporting furniture.
- ALWAYS educate children about the dangers of climbing on furniture to reach the television set or its controls.
- ALWAYS route cords and cables connected to your television so they cannot be tripped over, pulled or grabbed.
- NEVER place a television set in an unstable location.
- NEVER place the television set on tall furniture (for example, cupboards or bookcases) without anchoring both the furniture and television set to a suitable support.
- NEVER place the television set on cloth or other materials that may be located between the television set and supporting furniture.
- NEVER place items that might tempt children to climb, such as toys and remote controls, on the top of the television or furniture on which the television is placed.

If your existing television set is being retained and relocated, the same considerations as above should be applied.

■ Moving/Transportation

Before moving this TV, disconnect all cables and move in the vertical position only. Grasp the device on the upper and lower edges of the frame.

- Do not press or put stress on the front panel of the TV. It may take two or more people to carry larger TVs.

If you have to briefly lay down the TV, place the unit with its entire front surface lying flat on soft material.

The LED screen is made of glass and can break if is not handled properly. Always wear rubber gloves to carry the unit. If the LED screen is damaged, liquid crystal might leak out. In case of skin contact, immediately rinse thoroughly with water.

■ Power Supply

Incorrect voltages can damage the TV. Only connect this unit to a power supply with the correct voltage and frequency noted on the type plate, using the supplied power cable.

The power plug must be easily accessible so that the device can be disconnected at all time. The unit is live, even if in standby mode, as long as the unit is connected to a power outlet.

It is recommended that this unit is placed on a dedicated circuit.

- Do not overload the power outlets by connect too many appliances to the same outlet. Overloaded wall outlets, extension cords, etc. are dangerous and can result in electric shock and fire.

- Switch off the television after use and unplug it if it is not going to be used for.

After power off, don't turn it on again in 5 seconds. Frequent switching power supply in a short period of time can cause abnormal TV.

■ Power plug and power cable

- Do not touch the power plug with wet hands.
- Do not place heavy objects on the power cable. Route the cable so that it is not kinked or laid over sharp edges, walked on or exposed to chemicals. A power cable with damaged insulation can cause electric shock and fire.
- Pull the power plug, NOT on the cable when disconnecting. The cable can become damaged and cause a short circuit if pulled on.
- Do not place the power cable near a high temperature object.
- Do not move the TV with the power cable plugged into a socket.
- Do not use a damaged or loose power cable, or a damaged socket outlet.
- Do not use any power cords other than the one supplied with this unit.
- MAIN plug on the power cord is used as the disconnect device, the disconnect device and socket-outlet shall be easily accessible.

■ Set-up

Check that the location is suitable to bear the load of the TV. Place on a level, sturdy and horizontal base. Ensure that the unit does not hang over the edge of the base when placed in or on furniture. If placed on a cart, use caution when moving to avoid the unit from tipping over.

- Choose a good location for the television, in a clean place, away from sources of heat (sun, radiators, fireplaces), plants (pollen, dust, water) and the ground (risk of knocks, dust).
- Place the unit in a normal upright horizontal position. It must never be operated vertically, lying flat or hanging overhead from the ceiling.

When mounting the TV on a wall, follow the instructions supplied with the wall-mount, make sure not to install the TV by hanging the power and signal cables on the back of the TV.

■ Air ventilation and high temperatures

Install your TV only where there is proper ventilation, and ensure that there is at least 10 cm free space on the sides and 20 cm above the unit for air circulation. Excessive heat and obstruction of ventilation could lead to fire or early failure of some electric components.

- Do not place cloth, paper or other materials over the openings on the top, sides or bottom of the appliance.
- Take care not to touch the ventilation openings since they may become hot.
- Do not insert foreign objects into the TV through the vents.

Prevent small items from getting into the interior of the device through the ventilation slots. Such objects may cause short circuits, which may cause fire.

If something should get inside the unit, immediately unplug the power plug of the device and contact service support.

■ The Stand

- Do not use any stand other than the one supplied with this unit.
- Do not modify or use the stand if it becomes warped or physically damaged.
- During setup, make sure that all the screws are securely tightened.
- Ensure that the TV does not suffer any impact during the attachment of the stand.
- Ensure that children do not climb onto the stand.
- Attach or remove the stand with at least two people.

■ The LED screen

Despite thorough care when manufacturing this display, it cannot be 100% guaranteed that no sub-pixel defects will occur due to technical reasons. These cannot be considered as a device defect in terms of the guarantee. They will not affect the performance and reliability of the TV.

To prevent "image burn", avoid displaying still images for long periods of time, there is a possibility that a copy of the image may remain. If the aspect ratio is set to 4:3 for a long period of time, image burn may occur on the black areas. Image burn is not covered by the warranty.

- Do not apply strong force or impact on the display panel.

Avoid touching the LED screen or touching it for long periods of time. Doing so may produce some temporary distortion effects on the screen.

■ Radio waves

- Do not use the TV in any medical institutions or locations with medical equipment. Radio waves may interfere with medical equipment and cause malfunction.
- Do not use the TV near any automatic control equipment such as automatic doors or fire alarms. Radio waves may interfere with automatic control equipment and cause malfunction.

If you have a cardiac pacemaker, keep a distance of at least 22 cm from the TV. Radio waves may interfere with the operation of a pacemaker.

■ Built-in wireless LAN

- Do not connect to wireless networks that you do not have the usage rights for. Data transmitted and received over radio waves may be intercepted and monitored.

The built-in wireless LAN uses 2.4 GHz and 5 GHz frequency band. To avoid malfunctions or slow response caused by radio wave interference, keep the TV away from devices such as other wireless LAN devices, microwaves, mobile phones, and other devices that use 2.4 GHz and 5 GHz signal.

■ Warning about off-gassing

New furniture, carpet, paint, building materials and electronics can release chemicals into the air through

evaporation. After you set your TV up and turn it on for the first time, you may notice a slight smell within a couple of hours. This is because some components of TV are heating up for the first time. The materials that we use fully meet the environmental requirements and regulations. Your TV is working just fine and the fumes from the off-gassing will diminish eventually.

■ **Supervision**

- Do not let children play unsupervised close to the TV. It could tip over, be pushed off or pulled down from the stand surface and injure someone.
- Do not allow a switched-on TV to run unattended.

■ **Volume**

Loud music and noises can lead to irreversible damage to your ears. Avoid extreme volume, especially over long periods and when using headphones.

If you hear a drumming noise in your ears, turn down the volume or temporarily stop using headphones.

■ **Thunder Storms**

Pull out the power plug and all connected antenna cables from the TV during a thunderstorm. Overvoltage caused by lightning strikes can damage the TV via the antenna system, as well as the wall socket.

■ **Long periods of absence**

As long as the power plug is connected to a live socket outlet, the TV will consume power even in standby mode. The power plug and all connected antenna cables should be disconnected out during long periods of absence.

■ **Cleaning and care**

CAUTION:

Unplug the power cord prior to cleaning the TV.

Clean the screen with a soft, dry cloth after switching off and unplugging the television. And avoid glass sprays and other household cleaning agents. Do not use any chemicals.

- Do not subject the surfaces to insect repellent, solvent, thinner or other volatile substances. This may degrade the surface quality.
- Do not spray water or other liquids directly on the TV. Liquid inside the TV could lead to product failure.
- The surface of the display panel is treated and may be easily damaged. Take care not to scratch it with fingernails or other hard objects.
- Also wipe the power plug with a dry cloth at regular intervals.

■ **Service/Repair**

Never remove the cover/back of the TV; there are no user serviceable parts inside. Refer all service to qualified service personnel.

■ **Packaging**

Keep the anti-moisture materials and plastic bags out of reach of children.

Plastic bags can cause suffocation and the anti-moisture material is harmful if swallowed. If swallowed by mistake, force the patient to vomit and visit the nearest hospital.

■ **Modification**

Do not attempt to modify this product in any way. Unauthorised modification could void the warranty of this unit, cause electric shock and fires.

■ **Remote Control batteries**

- Store the remote control carefully, do not expose it to liquids and check the condition of the remote control batteries regularly to prevent corrosion of the contacts.
- Do not disassemble the product or attempt to remove the battery by yourself.
- Do not dispose it into fire.
- Do not crush or puncture the battery.
- Prevent it from falling down.
- Use the correct charging device.
- Be sure to dispose of battery correctly.
- Do not expose battery to excessive heat such as sunshine, fire or the like.

■ **Outdoor Antenna Grounding**

If an outdoor antenna used, be sure the antenna system is protected against voltage surges and built-up static charges.

■ **Disposal**

Refer to the recycling section of this manual.



AC voltage: This symbol indicates that the rated voltage marked with the symbol is AC voltage.



Class II product: This symbol indicates that it does not require a safety connection of protective earthing (ground).

Installation

⚠ CAUTION

- Be sure to disconnect the AC power cord before installing a stand or wall mount brackets.
- The display on your TV is fragile. Make sure the TV screen is not scratched or damaged by hard objects or from pressure.
- After the installation is completed, make sure the TV is steady on a table or firmly attached to a wall mount, before removing all protective film, if any.

▶ Installing the stand

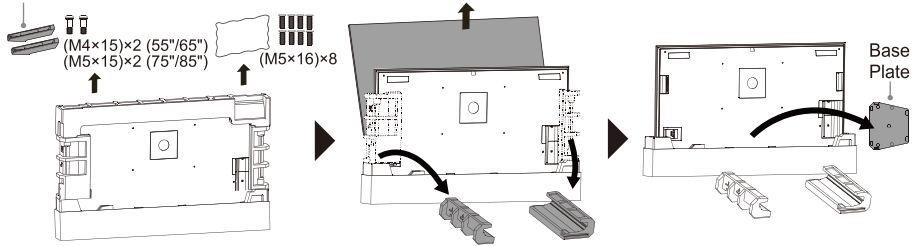
Follow the illustrations and textual instructions below to complete the installation steps:

1. Take out 2 base columns, 8 screws (M5×16), base plate and side cushions. Place the side cushions as the illustration shows below.

📌 NOTE

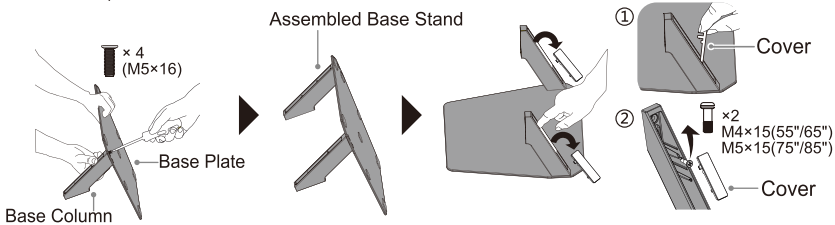
- There are 2 screws (M4×15 for 55"/65", M5×15 for 75"/85") inside the base columns.

Base Column



2. Secure the base columns and base plate together using 4 screws (M5×16), thus forming an assembled base stand.

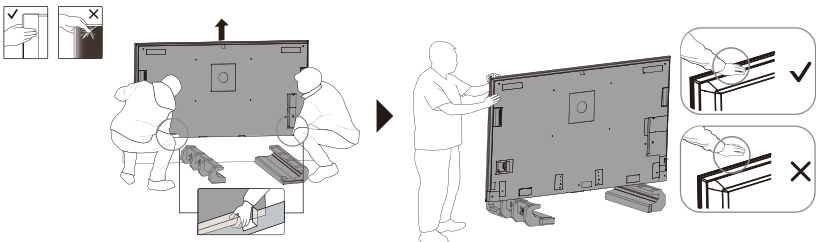
Remove 2 covers from the base columns and take out 2 screws (M4×15 for 55"/65", M5×15 for 75"/85") from the base columns.



3. Two people stand on each side of the TV. Hold the side of the TV with one hand and hold the bottom with the other hand. Lift and move the TV vertically to the side cushions. Do not pinch the screen when hold the TV.

📌 NOTE

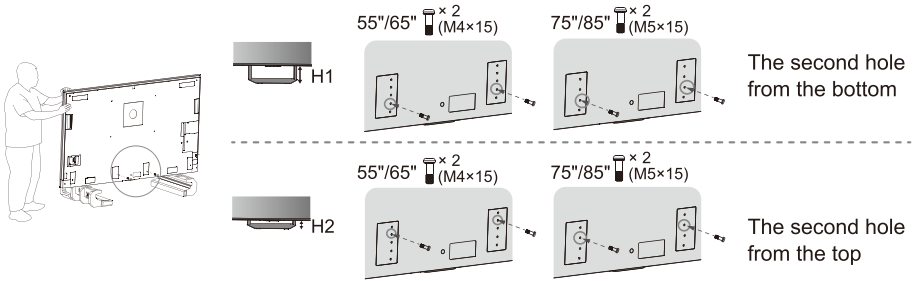
- One person holds the TV to prevent it from tipping during the whole installation process.



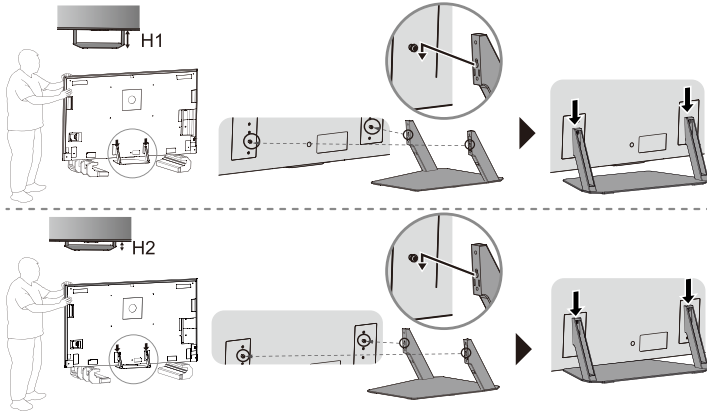
4. Secure the 2 screws (M4×15 for 55"/65", M5×15 for 75"/85") to screw holes on the back of TV as the illustration shows. You can adjust the height of base stand to H1 or H2.

NOTE

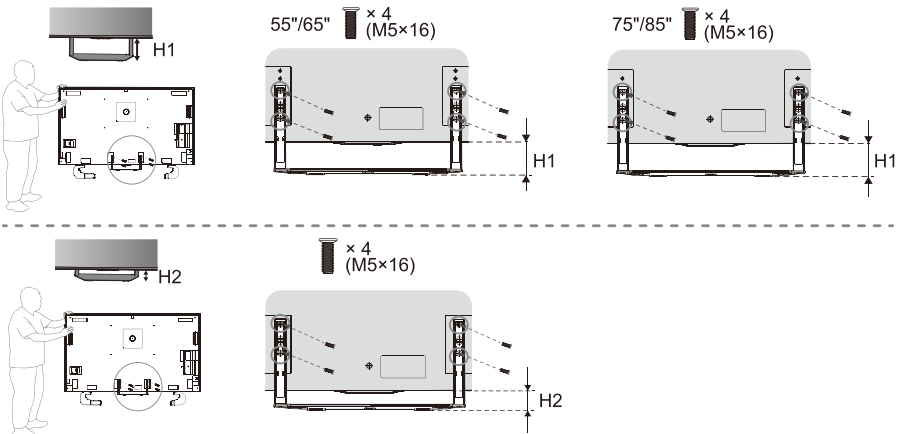
- If your TV is used with a soundbar, the H1 installation method with a high base stand is recommended; otherwise, the H2 installation method with a low base stand is recommended.



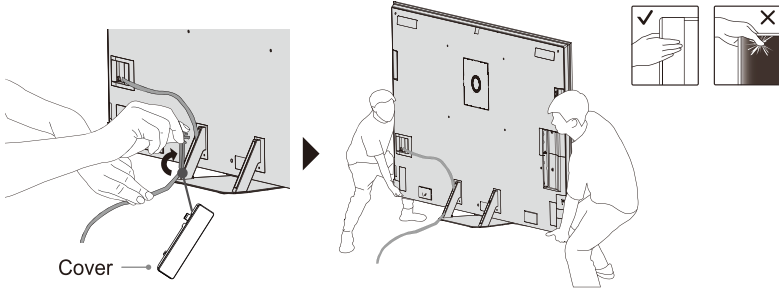
5. Align the holes on the assembled base stand with the two screws (M4×15 for 55"/65", M5×15 for 75"/85") on the TV, then hook it on and pull the assembled base stand downward.



6. Secure the assembled base stand to TV with 4 screws (M5×16).



7. You can tidy the cables into base columns and restore 2 covers. Then, move the TV to a desired place.



► Installing the wall mount bracket

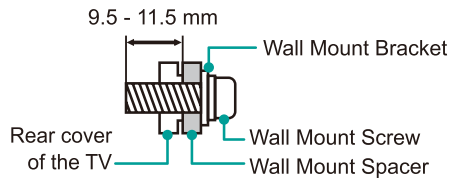
Before mounting the TV, remove the TV stand if you have already attached it, and make sure the wall mount bracket supports the weight of your TV.

⚠ CAUTION

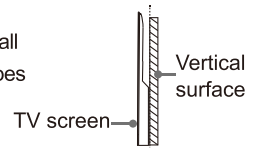
When mounting the TV on a wall, follow instructions provided with the wall mount bracket. If it is not correctly mounted, the TV may fall and cause property damage or personal injury.

- Place spacers between the TV and bracket.
- Standard dimensions are shown below.

Wall mount hole pattern (mm)	400 × 400 (55"/75")
	400 × 300 (65")
	600 × 400 (85")
Wall mount screw size	M6 (55"/65"/75")
	M8 (85")
Number of wall mount screw	4



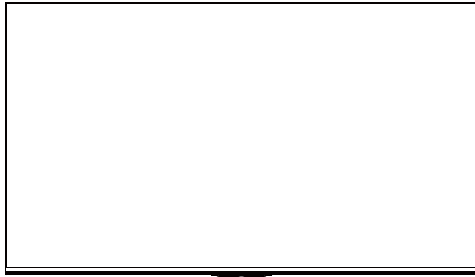
- We do not recommend hanging the TV on a slanted wall, and when wall mounting make sure your television remains parallel to the wall and does not lean forward.



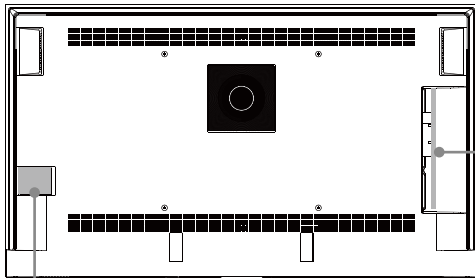
📌 NOTE

- The diameter and length of the screws differ depending on the wall mount bracket model.
- Wall mount bracket is optional. Your TV may not have wall mount bracket. Please refer to the actual accessories.

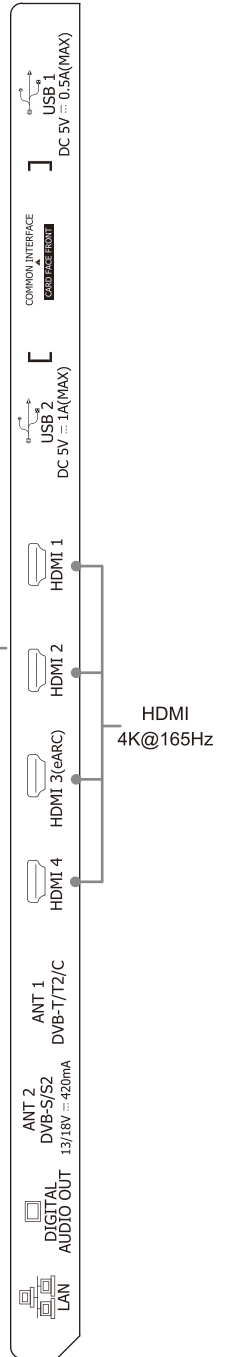
Appearance and Connection



- Power indicator
- Power button(Standby/Source)
- MIC
- Voice indicator
- Built-in microphone control button



AC INPUT



NOTE

- ANT2 Jack supports power supply for satellite antenna (13/18V, 420mA max).
- Check the jacks for position and type before making any connections. Loose connections can result in image or colour problems. Make sure that all connections are tight and secure.
- Not all A/V devices have the ability to connect to a TV, please refer to the user's manual of your A/V device for compatibility and connections procedure.
- Before connecting external equipment, remove the mains plug from the wall socket. Otherwise, it may cause electric shock.
- Powering on the TV requires several seconds to load programmes. Do not rapidly turn the TV off as it may cause the TV work abnormally.
- The Picture is Only for Reference.















Item	Description
Power indicator	The light is white in standby mode.
Power button (Standby / Source)	Press the button to turn the TV on. Press it again to bring up the control menu and move the focus between different inputs. Long press the button to make a selection.
Built-in microphone control button	To use Hands-Free Wake-up, first turn on the built-in microphone control button.
ANT (DVB-T/T2/C)	Connect an outdoor VHF/UHF antenna or cable.
ANT (DVB-S/S2)	Connect an outdoor Satellite antenna.
HDMI	Connect an HDMI cable from an external equipment.
HDMI (eARC)	Connect an HDMI cable from an external digital audio system. Please note that it works only when the TV is connected to the audio receiver that supports the eARC function.
USB	<p>Connect a USB device for browsing photos, listening to music and watching movies.</p> <p>Note:</p> <ul style="list-style-type: none"> When connecting a hard disk or a USB hub, always connect the mains adapter of the connected device to the power supply. If a USB 1.1 or USB2.0 device requires more than 500mA or 5V, the USB device may not be supported. Max supported current for USB 3.0 device is 1A (only for some models). Exceeding the max supported current may result in damage or data loss. Certain digital cameras may not be compatible with the TV.
DIGITAL AUDIO OUT	Connect an optical cable from an external digital audio system.
LAN	Connect an Ethernet cable to access a network or the Internet.
COMMON INTERFACE	<p>Insert the CI+ module for watching scrambled services like pay-tv channels or some HD channels.</p> <p>Note:</p> <ul style="list-style-type: none"> Do not repeatedly insert or remove the Common Access Module as this may damage the interface and cause a malfunction. You must obtain a CI+ module and card from the service provider of the channels you want to watch. CI+ is not supported in some countries and regions.

NOTE

- Before using Hands-Free Wake-up, connect your TV to the network. The Hands-Free Wake-up and some of its features are available on limited country/region/language.
- The location and names of the terminals on the TV may vary according to TV model, and not all terminals available on all models.

Remote Control

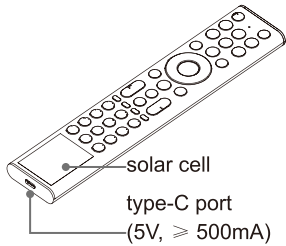
▶ Buttons of remote control

BUTTON	DESCRIPTION
	Power on/Standby
HomeOS	Open HomeOS experience
Four colour buttons	Special function buttons
	Press to enter Menu
	Activate AI assistant. This feature cannot be enabled in some scenarios.
▶	Playpad keys
 (^ / v / < / >)	D-pad (up/down/left/right navigation buttons); when watching TV programmes, press left or right button to display the current programme information
OK	Confirmation button
	Under the Menu or App, return to the previous place; for some models, long press to be used as EXIT
EXIT	Exit the menu or exit the application
	Custom button, provides quick access to its user-defined function
	Display the Home screen
	Select input sources
VOL	Volume (up/down)
CH	Channel (up/down)
	Activate the microphone
	Mute and restore sound; for models with  button, long press to be used as SUBTITLE
SUBTITLE	Activate or deactivate the subtitle mode
Number button	Select a channel or input numbers
GUIDE	Display the Electronic Programme Guide; for models with  button, long press to be used as CH.LIST
CH.LIST	Display the Channel List on the screen
INFO	Display the current programme information; for models with  button, long press to be used as TEXT
TEXT	Turn on/off the teletext function; for models with  button, long press to be used as INFO
APP buttons	Quick access buttons to APP

NOTE

- The included remote control will vary depending on model, country/region. Check information according to the actual remote control in the accessory bag.
- Buttons listed here are for reference only. Actual remote control may vary depending on model, country/region.

▶ Charging the Remote Control (for solar powered remote)



You can charge the remote by exposing the solar cell to light or using a USB type-C cable(not provided).

The type-C port is used for quick charging. When charging by type-C port, the red indicator will blink. When fully charged, the indicator will stop blinking first and then turn off.

NOTE

- Product image is only for reference, actual product may vary in appearance.
- The battery is not user replaceable. Do not try to remove or change the internal battery by yourself, cause it may cause damage to the battery/device, personal injury, fire or explosion.
- When you do not use the remote control, place it face up to make the solar cell expose to light. This will extend the remote control's operating time.
- Leaving a battery in an extremely high temperature surrounding environment that can result in an explosion or the leakage of flammable liquid or gas.
- Battery chemicals can cause a rash. If chemicals touch your skin, wash immediately.
- Disposal of a battery into fire or a hot oven, or mechanically crushing or cutting of a battery, that can result in an explosion.
- Place the remote control correctly to prevent it from falling down.
- A battery subjected to extremely low air pressure that may result in an explosion or the leakage of flammable liquid or gas.

▶ Pairing the Remote Control (only for Bluetooth remote control)

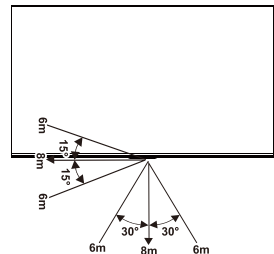
Pair the remote to the TV after you power it on. Keep the remote control within 3 metres from the TV. Press any button (except power and mic button) to pair.

NOTE

- In special cases, press and hold [≡] button to pair.
- If an unknown error occurred with the remote, then it could have been caused by interference. Try to remove what's causing the interference and pair it again.
- If an unknown error occurred in the remote control, please recharge by using type-C port and activate the remote control.
- The remote cannot be paired to the TV while the TV is in standby mode.

▶ Remote Control Operation Range

1. The remote control can work at a distance of up to 8 metres in front of the TV set.
2. The remote control angle: taking the remote sensor as an apex, 6 metres away, its controlled horizontal angle is within $\pm 30^\circ$, while the vertical angle is within $\pm 15^\circ$.
3. The operating distance may vary depending on the brightness of the room.



Disposal of this unit

Product should not be damaged, dismantled or thrown in municipal waste. It should be packed and handed over to authorised re-cycler.

Specifications

Features, appearance and specifications are subject to change without notice.

Item		55"	65"
Dimension (W × H × D)	Without Stand	48.3 × 28.1 × 2.0 inches (1226 × 714 × 52 mm)	56.9 × 33.0 × 2.0 inches (1446 × 837 × 52 mm)
	With Stand	48.3 × 30.5 × 10.4 inches (1226 × 774 × 263 mm) or 48.3 × 29.3 × 10.4 inches (1226 × 744 × 263 mm)	56.9 × 35.3 × 11.4 inches (1446 × 897 × 290 mm) or 56.9 × 34.1 × 11.4 inches (1446 × 867 × 290 mm)
Weight	Without Stand	31.1 lbs (14.1 kg)	43.2 lbs (19.6 kg)
	With Stand	38.1 lbs (17.3 kg)	51.6 lbs (23.4 kg)
Active Screen Size (Diagonal)		139 cm	164 cm
Audio power		10W × 2 + 20W + 5W × 2	10W × 2 + 20W + 5W × 2
Operating mode power density		0.022 Watts/cm ²	0.021 Watts/cm ²
Item		75"	85"
Dimension (W × H × D)	Without Stand	65.7 × 37.9 × 2.0 inches (1668 × 963 × 52 mm)	74.4 × 42.8 × 2.0 inches (1890 × 1088 × 52 mm)
	With Stand	65.7 × 40.5 × 12.2 inches (1668 × 1029 × 310 mm) or 65.7 × 39.3 × 12.2 inches (1668 × 997 × 310 mm)	74.4 × 45.4 × 14.2 inches (1890 × 1152 × 360 mm) or 74.4 × 44.1 × 14.2 inches (1890 × 1120 × 360 mm)
Weight	Without Stand	61.5 lbs (27.9 kg)	76.2 lbs (34.6 kg)
	With Stand	70.8 lbs (32.1 kg)	89.2 lbs (40.5 kg)
Active Screen Size (Diagonal)		189 cm	215 cm
Audio power		10W × 2 + 20W + 5W × 2	10W × 2 + 20W + 5W × 2
Operating mode power density		0.019 Watts/cm ²	0.021 Watts/cm ²
Network standby power consumption		≤ 2.0 W	
Power consumption in standby mode		0.5 W	
Power consumption		Please refer to the rating label.	
Power supply		Please refer to the rating label.	
Screen resolution		3840 × 2160	
Receiving systems	Analog	PAL-D/K, B/G, I, SECAM-D/K, B/G	
	Digital	DVB-T/T2, DVB-C, DVB-S/S2	

Wireless LAN Module specifications	Frequency Range	2.4-2.4835GHz 5.15-5.85GHz
	Output Power (Max.)	2.4-2.4835GHz 17dBm 5.15-5.25GHz 14dBm 5.25-5.35GHz(DFS Band) 14dBm 5.49-5.71GHz(DFS/TPC Band) 14dBm 5.725-5.85GHz(for Non EU) 14dBm
	Standards	IEEE 802.11a/b/g/n/ac (55"/65"/85") IEEE 802.11a/b/g/n/ac/ax (75")
Bluetooth Module specifications	Frequency Range	2.4-2.4835GHz
	Output Power (Max.)	2.4-2.4835GHz, Class1, 6dBm
Environmental conditions		Temperature: 41°F - 95°F (5°C - 35°C) Humidity: 20% - 80% RH Atmospheric pressure: 86 kPa - 106 kPa
HDMI Input		RGB / 60Hz (640×480, 800×600, 1024×768) YUV / 60Hz (480i, 480p, 720p, 1080i, 1080p) YUV / 50Hz (576i, 576p, 720p, 1080i, 1080p) 24Hz 25Hz 30Hz 50Hz 60Hz (3840×2160) 120Hz 144Hz 165Hz (3840×2160) 120Hz 144Hz 165Hz 240Hz 288Hz 330Hz (2560×1440) 120Hz 144Hz 165Hz 240Hz 288Hz 330Hz (1920×1080)

Other Information

Recycling/Licenses

WEEE (Waste Electronic Electric Equipment)

European Directive 2012/19/EU



This symbol on the product or on its packaging indicates that this product must not be disposed of with your household waste. Instead, it is your responsibility to dispose of your waste equipment by handing it over to a designated collection point for the recycling of waste electrical and electronic equipment. The separate collection and recycling of your waste equipment at the time of disposal will help to conserve natural resources and ensure that it is recycled in a manner that protects human health and the environment. For more information about where you can drop off your waste equipment for recycling, please contact your local city office, your household waste disposal service or the shop where you purchased the product.

Batteries



In accordance with the Battery Directive, the battery in this product should not be disposed of in the domestic waste. The built-in battery in this product is not user replaceable, please contact your service provider for more information. Dispose the product to waste disposal service and they will take appropriate measures for the recycling and treatment.

ROHS (Restriction of Hazardous Substance)

European Directive 2011/65/EU



This European directive limits the use of dangerous and hazardous substances which are difficult to recycle.

This allows recycling easily the EEE and contributes to the safeguard of the environment. Substances included in this product match to the RoHS directive.



The terms HDMI, HDMI High-Definition Multimedia Interface, HDMI Trade dress and the HDMI Logos are trademarks or registered trademarks of HDMI Licensing Administrator, Inc.



Dolby, Dolby Vision, Dolby Atmos, and the double-D symbol are registered trademarks of Dolby Laboratories Licensing Corporation. Dolby Vision IQ is a trademark of Dolby Laboratories Licensing Corporation. Manufactured under license from Dolby Laboratories. Confidential unpublished works. Copyright © 2012-2024 Dolby Laboratories. All rights reserved.



Manufactured under license from DTS, Inc. and/or its affiliates. For patents, see <https://xperi.com/dts-patents/>. DTS, the DTS logo, DTS:X, and the DTS:X logo are trademarks or registered trademarks of DTS, Inc. and/or its affiliates in the U.S. and/or other countries. © DTS, Inc. and/or its affiliates. All rights reserved.



Manufactured under license from IMAX Corporation. IMAX® is a registered trademark of IMAX Corporation in the United States and/or other countries. For DTS patents, see <http://patents.dts.com>. Manufactured under license from DTS Licensing Limited. DTS and the DTS logo are registered trademarks or trademarks of DTS, Inc. in the United States and other countries. © 2020 DTS, Inc. ALL RIGHTS RESERVED.

EPREL Registration Information

EPREL-Registrierungsdaten
Información del registro EPREL
Informazioni di registrazione EPREL

55U7S PRO (2508336)
55U70S PRO (2508364)
55U71S PRO (2508367)
55U72S PRO (2508369)
55U7DS PRO (2508375)
55U76S PRO (2508378)
55U77S PRO (2508383)
55U78S PRO (2508385)
55U79S PRO (2508386)
55U7STUK PRO (2508414)
55U70STUK PRO (2508482)
55U71STUK PRO (2508487)
55U72STUK PRO (2508488)
55U76STUK PRO (2508491)
55U78STUK PRO (2508493)

65U7S PRO (2558995)
65U70S PRO (2559022)
65U71S PRO (2559027)
65U72S PRO (2559028)
65U7DS PRO (2559031)
65U76S PRO (2559033)
65U77S PRO (2559036)
65U78S PRO (2559040)
65U79S PRO (2559041)
65U7STUK PRO (2559043)
65U70STUK PRO (2559044)
65U71STUK PRO (2559047)
65U72STUK PRO (2559049)
65U76STUK PRO (2559051)
65U78STUK PRO (2559052)

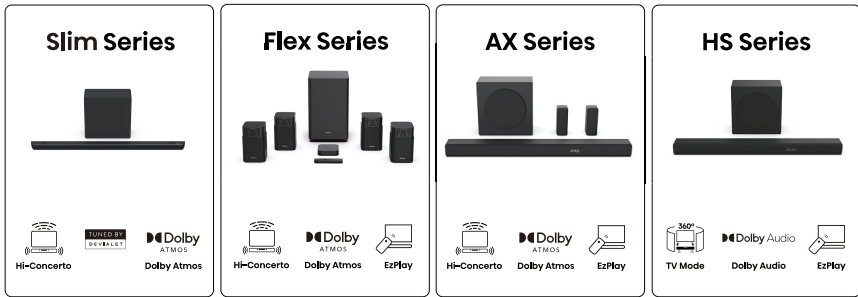
Informação de Registo EPREL
Informations sur l'enregistrement EPREL
EPREL-registratiegegevens

75U7S PRO (2521150)
75U70S PRO (2521199)
75U71S PRO (2521200)
75U72S PRO (2521202)
75U7DS PRO (2521203)
75U76S PRO (2521208)
75U77S PRO (2521210)
75U78S PRO (2521211)
75U79S PRO (2521216)
75U7STUK PRO (2521219)
75U70STUK PRO (2521220)
75U71STUK PRO (2521222)
75U72STUK PRO (2521224)
75U76STUK PRO (2521226)
75U78STUK PRO (2521227)

85U7S PRO (2565057)
85U70S PRO (2565115)
85U71S PRO (2565119)
85U72S PRO (2565120)
85U7DS PRO (2565121)
85U76S PRO (2565124)
85U77S PRO (2565126)
85U78S PRO (2565128)
85U79S PRO (2565129)
85U7STUK PRO (2565130)
85U70STUK PRO (2565132)
85U71STUK PRO (2565136)
85U72STUK PRO (2565137)
85U76STUK PRO (2565138)
85U78STUK PRO (2565141)

Hisense TV Sound companion

Hisense Soundbar



Model	Slim Series	Flex Series	AX Series				HS Series			
	SS120Q/SS120QW	HT Saturn	AXS140Q	AXS125H	AXS100Q	AXS120Q	HS3100	HS2100	HS2000	HS1000
No. of Channels	5.1.2	4.1.2	5.1.4	5.1.2	5.1	3.1.2	3.1	2.1	2.1	2.0
Subwoofer Included	●	●	●	●	●	●	●	●	built-in design	
Rear Speakers Included		●	●	●	●					
Hi-Concerto	●	●	●	●	●	●				
Dolby Atmos & DTS:X	●	●	●	●	●	●				
TV Mode							●	●	●	●
EzPlay	●	●	●	●	●	●	●	●	●	●
HDMI ARC	eARC	eARC	eARC	eARC	eARC	eARC	●	●	●	●
ConnectLife	●	●	●			●				

* Please refer to Hisense website for further details and compatibility information