

PHILIPS

Smart Tower fan

CX7550



English 6

Important

Read this manual carefully before you use the appliance, and save it for future reference.

To ensure the best performance, kindly suggest the firmware of your tower fan is upgraded to the latest version. You can do this upgrade via the Air+ app (only for products with Wi-Fi/Bluetooth function).

Danger

- Do not let any liquid or flammable detergent enter the appliance, to avoid electric shock and/or a fire hazard.

Warning

- This appliance can be used by children aged from 8 years and above and persons with reduced physical, sensory or mental capabilities or lack of experience and knowledge if they have been given supervision or instruction concerning use of the appliance in a safe way and understand the hazards involved.
- Children shall not play with the appliance.
- Cleaning and user maintenance shall not be made by children without supervision.
- Children of less than 3 years should be kept away unless continuously supervised.
- This appliance is not intended for use by persons (including children) with reduced physical sensory or mental capabilities, or lack of experience and knowledge, unless they have been given supervision or instruction concerning the use of the appliance by a person responsible for their safety.
- Children should be supervised to ensure that they do not play with the appliance.
- Do not block the air inlet and outlet, e.g. by placing items on the air outlet or in front of the air inlet.
- Do not insert fingers, sticks or other objects into the machine, in order to avoid electric shocks, physical injury or fire.
- Do not use the appliance near gas appliances, fireplaces.
- Do not spray any flammable materials such as insecticides or fragrance around the appliance.
- Do not use if there are visible signs of damage to the device, the plug, the power cord.
- Do not use this device if it has been dropped.
- If the power cord is damaged, you must have it replaced by Philips, a service center authorized by Philips, or similarly qualified persons in order to avoid a hazard.

- WARNING: Keep new and used batteries out of the reach of children. Swallowing can lead to chemical burns, perforation of soft tissue, and death. Severe burns can occur within 2 h of ingestion. If you think a battery might have been swallowed or placed inside any part of the body, seek medical attention immediately.
- WARNING: Dispose of used batteries immediately and safely.
- Standard WiFi interface based on 802.11b/g/n/ax at 2412-2472 MHz with a maximum output power of 64mW EIRP (only for products with Wi-Fi function).
- Bluetooth version 5.2 (LE) at frequency 2402-2480 MHz with RF output less than 10mW EIRP (only for products with Bluetooth function).

Caution

- The device must not be located immediately below a socket outlet.
- Always place and use the appliance on a dry, stable, flat and horizontal surface.
- Do not use the appliance in surroundings with high humidity such as the bathroom, toilet, kitchen, swimming pool, or any outdoor environment.
- Do not sit or stand on the appliance. Do not knock against the appliance. Do not place anything on top of the appliance.
- Always unplug the appliance when you want to move or clean the appliance, or carry out any other required maintenance. After assembly, do not remove the guards during use or cleaning.
- The appliance is only intended for household use under normal operating conditions.
- Only operate this remote control with the type of disposable battery specified in the user manual.
- Do not recharge non-rechargeable batteries.
- Keep the product and batteries away from fire and do not expose them to direct sunlight or high temperatures.
- If the product becomes abnormally hot or smelly, or changes color, stop using the product and contact Philips.
- Do not coil the power cord around the base.
- Do not place the tower fan in a window. Keep your tower fan away from water and wet or damp areas. Keep your tower fan away from open flames, heat sources, or other heating and cooking appliances.
- Do not place anything into any opening on the tower fan.
- Do not place the remote control and the batteries in microwave ovens or on induction cookers.
- Do not modify, pierce, damage or dismantle the remote control or battery to prevent batteries from heating up or releasing toxic or hazardous substances. Do not short-circuit the battery.
- If batteries are damaged or leaking, avoid contact with the skin or eyes. If this occurs, immediately rinse well with water and seek medical care.
- When you handle batteries, make sure that your hands, the remote control and the batteries are dry.
- Insert 2 Alkaline, type LR03-AAA-1.5V batteries with the + and - poles pointing in the direction indicated in the battery compartment or holder.

- Do not mix different brands and types of batteries, do not mix new and used batteries and do not use batteries with different date codes.
- Remove batteries from the remote control if you are not going to use it for some time.
- To avoid accidental short-circuiting of batteries after removal, do not let battery terminals come into contact with metal objects (e.g. coins, hairpins, rings). Do not wrap batteries in aluminum foil. Tape battery terminals or put batteries in a plastic bag before you discard them.
- Do not leave empty disposable batteries inside the remote control.
- Do not use the aroma function if you are allergic to essential oils.
- Read the user manual of essential oils carefully before using the aroma function.
- Make sure the product is disconnected with power before dropping essential oils into the aroma box.
- It is suggested not using the aroma function if you have respiratory issues.
- If you feel unwell during the use of the aroma function, stop this function immediately.
- Do not use the aroma function for infants, pregnant women or women in lactation period.
- It's not recommended to use substances other than essential oils.
- The "T" mark on the type plate indicates that this fan is suitable for use in tropical climates.

Electromagnetic fields (EMF)

This appliance complies with the applicable standards and regulations regarding exposure to electromagnetic fields.

Recycling



This symbol means that this product shall not be disposed of with normal household waste (2012/19/EU).



- This symbol means that this product contains disposable batteries which shall not be disposed of with normal household waste.(EU)2023/1542.
- Follow your country's rules for the separate collection of electrical and electronic products and batteries. Correct disposal helps prevent negative consequences for the environment and human health.

Removing disposable batteries

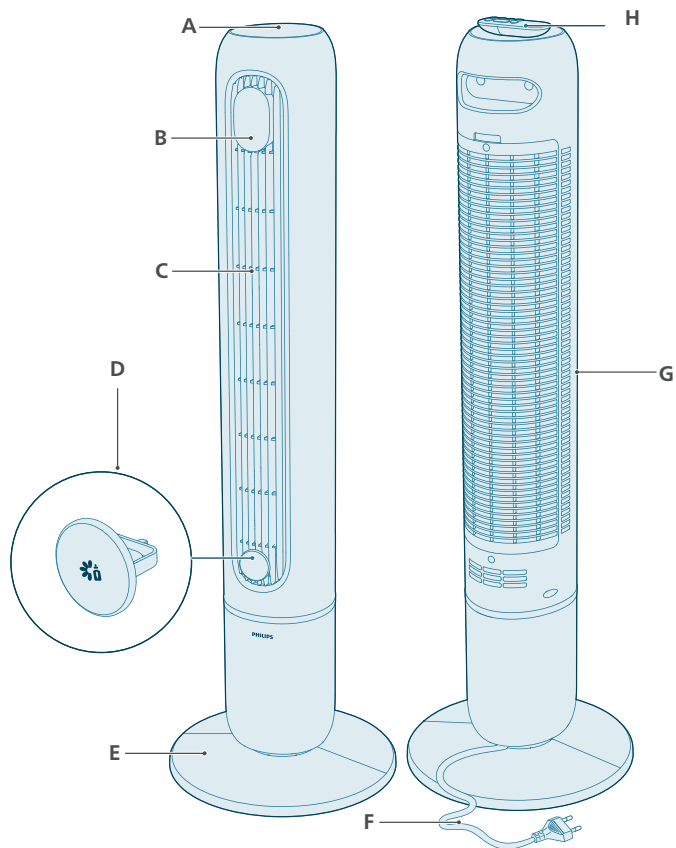
Only the remote control contains disposable batteries.

To remove disposable batteries, see the instructions for placing and/or removing batteries in the user manual.

Always remove empty disposable batteries from the product. Take any necessary safety precautions when you dispose of batteries.

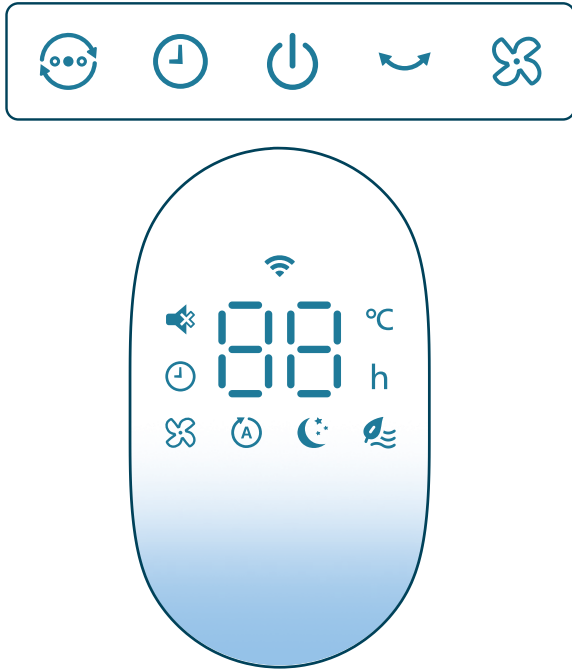
Your Tower fan

Product overview



A	Control buttons	E	Fan base
B	Display panel	F	Power cord
C	Air outlet	G	Air inlet
D	Aroma box	H	Remote control

Controls overview



Control buttons



Mode switch



Timer button



Power on/standby button



Oscillation button



Fan speed selection

Display panel



Mute indicator



AutoAdapt mode

1-12h

Timer indicator



Advanced Sleep mode



Manual speed (levels 1-12)

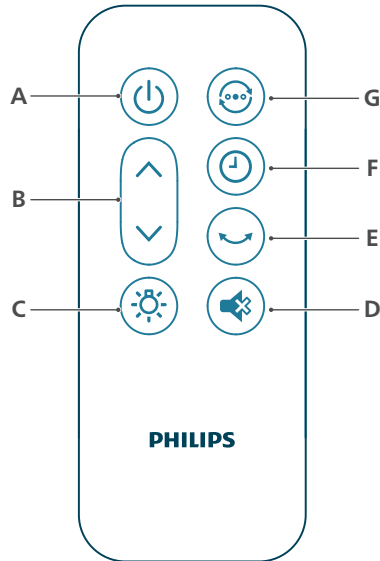


Natural Breeze mode



Wi-Fi indicator

Remote control overview



A Power on/off button

B Fan Speed selection

C Light on/off button

D Mute button

E Oscillation button

F Timer button

G Mode switch button

Getting started

Understanding Wi-Fi indicator

Wi-Fi icon status

Blink in orange

Stable in orange

Blink in white

Stable in white

Off

Wi-Fi connection status

Connecting to the smart phone

Connected to the smart phone

Connecting to the server

Connected to the server

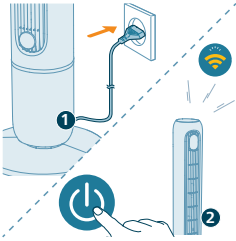
Wi-Fi function disabled or device lights are off


Wi-Fi connection

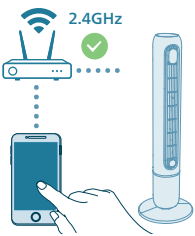
Setting up the Wi-Fi connection for the first time



- 1 Download and install the Philips "Air+" app from the App Store or Google Play.



- 2 Put the plug of the Tower fan in the power socket and press the power button to turn on the appliance.
 - The Wi-Fi indicator  blinks orange for the first time.



- 3 Make sure that your smart phone or tablet is successfully connected to your Wi-Fi network.

Note:

Enable Bluetooth feature on your smart phone to ensure the smooth pairing.

Please ensure your smartphone is connected to a 2.4GHz (home) Wi-Fi network instead of a 5GHz Wi-Fi network or public Wi-Fi. For a successful pairing, we suggest turning off your mobile data before initiating the pairing process.



- 4 Launch the Philips "Air+" app and click on "Add a device" or press the "+" button on the screen. Follow the on-screen instructions to connect the appliance to your network.

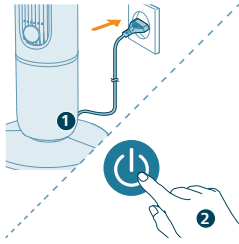
- After a successful connection, the Wi-Fi indicator remains steady in white.

Note:


This instruction is only valid when the appliance is being set up for the first time. Repeat the setup if the network has changed or if setup is required again.

If you want to connect more than one appliance to your smart phone or tablet, you can add the appliance in the app on additional smart phones without doing the Wi-Fi connection reset on the device.

Make sure that the distance between your smart phone or tablet and the appliance is less than 10 m without any obstructions.



Reset the Wi-Fi connection

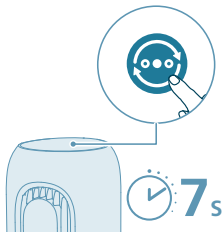
1 Put the plug of the appliance in the power socket and press  to turn on the Tower fan.

2 Long press  button for 7 seconds until you hear a beep.

- The Tower fan goes to pairing mode.

- The Wi-Fi indicator  blinks orange.

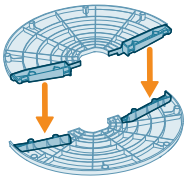
3 Follow the steps 3-4 in "Setting up the Wi-Fi connection for the first time" section.



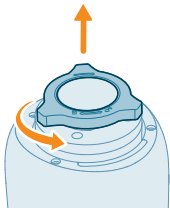
Installing the fan base

Remove all packaging materials before first use.

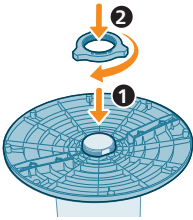
Note: Make sure the fan is unplugged from the electrical outlet before installing the base.



1 Align the two clips with the mounting slots on the fan base, then press them firmly into place.



2 Invert the Tower fan gently. Remove the plastic nut located at the bottom of the Tower fan by unscrewing it.

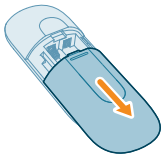


3 Attach the base to the Tower fan. Tightly screw the plastic nut back on.

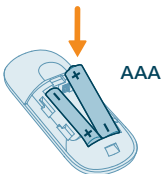
Using the remote control for the first time

Risk of product damage! When the remote control is not used for long periods, remove the battery.

1 Open the battery compartment.



2 Insert 2 Alkaline, type LR03-AAA-1.5V batteries with correct polarity (+/-) as indicated.



3 Close the battery compartment.



Using the aroma function

The essential oils are not included with the product. Please purchase and use the essential oils if needed.

Read and follow the safety and use instruction of the essential oil carefully before using it.

Make sure the product is disconnected from the power supply before adding essential oils into the aroma box.

Do not use substances other than essential oils.

Check the ingredient information of the essential oil against your known allergies and do not use it if necessary.

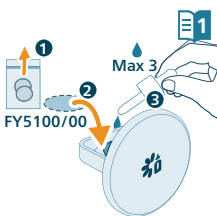
Consult and follow your doctor's recommendation before using essential oils for infants, pregnant women, women in the lactation period, or if you have respiratory issues.

If you feel unwell, experience irritation or discomfort during the use of essential oils, please discontinue use.

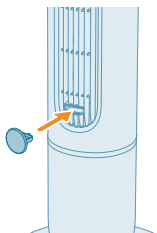
Do not use the aroma function with essential oils for infants, pregnant women, or women in the lactation period.



1 Push to open the aroma box.



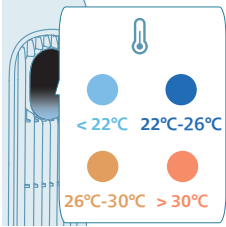
2 Remove the aroma box and drop in 2-3 drops of essential oils to the supplied aroma pad.



3 Put the aroma box back into the appliance.

Using the Tower fan

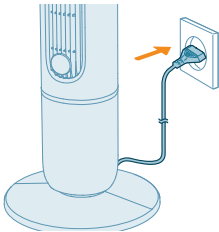
Understanding the temperature light



The temperature display automatically lights up when the Tower fan is switched on, and the light color changes according to the temperature. This feature can be disabled in the Air+ app.


Temperature	Color	Temperature level
≤22°C	●	Cool
22-26°C	●	Comfort
26-30°C	●	Warm
>30°C	●	Hot

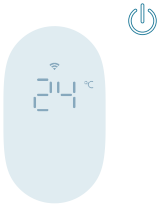
Turning on and standby mode




1 Put the plug in the power socket.



2 Press the  button on the appliance or the remote control to switch on the Tower fan. The appliance beeps.

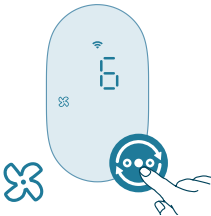


- 3 Press the  button again to enter the standby mode.

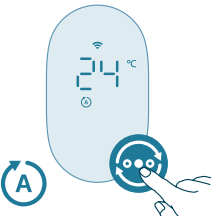
While the appliance is in standby mode, the display shows the ambient temperature at low brightness. To turn off the temperature display, disable this feature in the app.

Switching the mode

Press the mode switch button to choose the manual mode, the AutoAdapt mode, the Natural Breeze mode and Advanced Sleep mode.



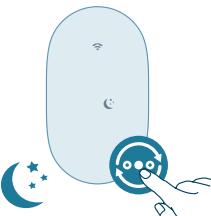
Manual mode: Stay in control of the airflow and sound level with the 1–12 speed levels.



AutoAdapt mode: In AutoAdapt mode, the fan responds in 1°C steps:

- For each 1°C increase in ambient temperature, the fan speed increases by one level.
- For each 1°C decrease in ambient temperature, the fan speed decreases by one level.

Example: If you last set the fan to Speed 6 and the temperature rises by 2°C, the fan will gradually increase to Speed 8. If the temperature then drops by 1°C, it will automatically reduce to Speed 7.



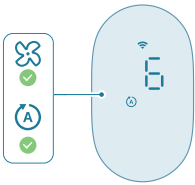
Advanced Sleep mode: Advanced Sleep mode gradually decreases fan speed every 30 minutes while turning off the display lights. It helps you drift off naturally while saving energy.



Natural Breeze mode: Feel the wind with Natural Breeze mode. This mode adjusts fan speeds dynamically to mimic the natural movement of air and provide a calming breeze in the room.

Changing the fan speed

 1-12



Press the fan speed button on the appliance or the arrow button on the remote control to choose the fan speed 1-12.

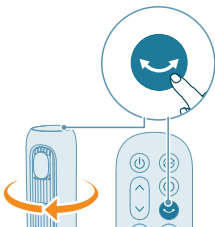
You can adjust the fan speed on the AutoAdapt mode and the manual mode.

Using the light on/off function



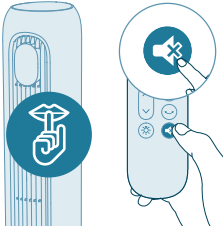
Press the light on/off button on the remote control to turn on, dim or turn off the light the display panel.

Oscillation



Press the oscillation button on the appliance or remote control to activate the rotation feature.

Muting beep sound on the fan



- Press the mute button on the remote control to mute the beep sound on the fan.
- Press the mute button on the remote control again to unmute the beep sound.

Cleaning and maintenance

Always unplug the appliance before you clean it.

Never immerse the appliance in water or any other liquid.

Never use abrasive, aggressive, or flammable cleaning agents such as bleach or alcohol to clean any part of the appliance.

Regularly clean the outside of the fan to prevent dust from collecting.

- Use a soft, dry cloth to clean both the exterior of the appliance and the air outlet.

Storage

- 1 Turn off the appliance and unplug from the power socket.
- 2 Clean the appliance.
- 3 Store the appliance in a cool, dry location.
- 4 Always thoroughly wash hands after cleaning.

Troubleshooting

This chapter summarizes the most common problems you could encounter with the appliance. If you are unable to solve the problem with the information below, contact the Consumer Care Center in your country.

Problem	Possible solution
My fan fails to turn on or off.	If the appliance can't be turned on, please ensure the power plug is plugged in properly or try another power socket.
	If the appliance still doesn't work, contact the Consumer Care Center in your country.
The remote control is not working.	Check if batteries are properly installed in the remote control or replace with new batteries.

	Make sure the remote control aims to the signal receiver of the appliance and clear out the objects that may block signals.
My fan is not producing sufficient amount of air or very weak.	Ensure the appliance is set to the highest fan speed for maximum air circulation. Allow the appliance to fully circulate the air throughout the room, this may take few minutes.
	Ensure all the air inlet and outlet grilles are unobstructed.
The fan produces a strange/burnt smell.	The first few times you use the appliance, it may produce a plastic smell. This is normal on new appliance. However, if the appliance produces a burnt smell, turn off the appliance and unplug immediately, then contact the Consumer Care Center in your country.
My fan is too loud.	The higher the fan speed setting of the appliance, the louder the noise will be. Set to lower fan speed, the noise will be reduced.
	If anything drops into air outlet, it may also cause abnormal loud sound. Immediately turn off appliance, and get the foreign objects out of the appliance.
	Please re-check each steps in installation based on instruction on quick start guide or user manual and ensure fan base is assembled correctly.
	If there is abnormal sound, contact the Consumer Care Center in your country.
The fan base is wobbly or vibrating.	Check if the appliance is placed on the flat floor or surface.
	Check if any foreign objects beneath the appliance.
	Check if the base of the appliance is properly assembled.
	Check the chapter "Installing the fan".
My aroma function doesn't work well (too weak or strong).	Use proper 2-3 drops of essential oil.
	Different essential oil may has different perceived intensity.
	It needs to take some time to evaporate the smell to whole room.
The Wi-Fi setup is not successful.	Please ensure your smart phone is connected to a 2.4GHz (home) Wi-Fi network instead of a 5GHz Wi-Fi network or public Wi-Fi. For a successful pairing, we suggest turning off your mobile data before initiating the pairing process.
	Ensure to enable the following permissions: "Location", "Storage", "Bluetooth", and "Local Network" on your smart phone. After a successful Wi-Fi setup, you can change permission settings as desired.

Please verify that you have entered the correct Wi-Fi password. The password is case-sensitive, has a limit of 63 characters. Special symbols are not accepted.

Ensure the network name of your home Wi-Fi is correct. The network name is case-sensitive.

If you are using a VPN on your smart phone, please turn it off before starting the pairing process.

If your router has a whitelist set up to block pairing, please disable the whitelist to ensure successful connection.

Please ensure that both your device and smart phone are within 10 meters of the router.

Ensure the app has been updated to the latest version.

Warranty and support

Versuni Netherlands B.V., registered at Claude Debussylaan 88, Amsterdam, NL, offers a two-year warranty on this product after the date of purchase (or the date of delivery, if later). This warranty is not valid if a defect is due to incorrect use or poor maintenance. Our warranty does not affect your rights under law as a consumer. For more information, for spare parts, or for invoking the warranty, please visit our website home.id/support.

Order parts or accessories

If you have to replace a part or want to purchase an additional part, go to your Philips dealer or visit www.philips.com/support.

If you have problems obtaining the parts, please contact the Philips Consumer Care Center in your country.

Information to identify the CX7550 to which the information relates to

Description	Symbol	Value	Unit
Maximum fan flow rate	F	40,7	m ³ /min
Fan power output	P	26,8	W
Service value	SV	1,5	(m ³ /min)/W
Standby power consumption	P _{SB}	0,6	W
Fan sound power level	L _{WA}	58	dB(A)
Fan sound pressure level	L _{pmc}	43,9	dB(A)
Maximum air velocity	C	4,0	meters/sec

22 English

Measurement standard for service value IEC60879:2019

Contact details for obtaining more information DAP B.V.
Tussendiepen 4 a, 9206AD Drachten, The Netherlands

Maximum air velocity (at air outlet) C 8,4 meters/sec

PHILIPS and the Philips Shield Emblem are registered trademarks of Koninklijke Philips N.V. and are used under license.

This product has been manufactured by and is sold under the responsibility of Versuni Holding B.V., and Versuni Holding B.V. is the warrantor in relation to this product.

2026 © Versuni Holding B.V.



www.home.id