



Search



EN

Whisper 3

Fan

User manual

Original user manual, written in the English language

1. Preface

Thank you for choosing Duux.

At Duux we believe in the importance of a comfortable and healthy living environment.

Enhancing your wellbeing by designing appealing, functional and effective products is the passion that drives us every day.

With our range of innovative air treatment products we aim to provide you with the best possible indoor air quality.

Imagine a cooling breeze that follows you into every corner of your home.

Whisper 2 is an incredibly versatile fan that will transform any space into a cool oasis while remaining whisper quiet.

So, when the heat kicks up, set your perfect temperature and enjoy the breeze.

2. About this manual

Make sure you have fully read and understood the instructions in this document before installing or using the product. Keep this document for future reference.

2.1. Language

This manual is originally written in English. All other languages are translations of the original English manual.

3. Product overview

3.1. Intended use

This product is intended for cooling air in a room.

This product is intended for indoor use only.

This product is intended for normal household use only. This product is not intended for use in commercial or industrial environments.

This product is not intended for use by persons (including children) with reduced physical, sensory or mental capabilities, or lack of experience and knowledge, unless they have been given supervision or instruction concerning use of the appliance by a person responsible for their safety.

Any adjustments to the product may affect the safety, warranty, and correct operation.

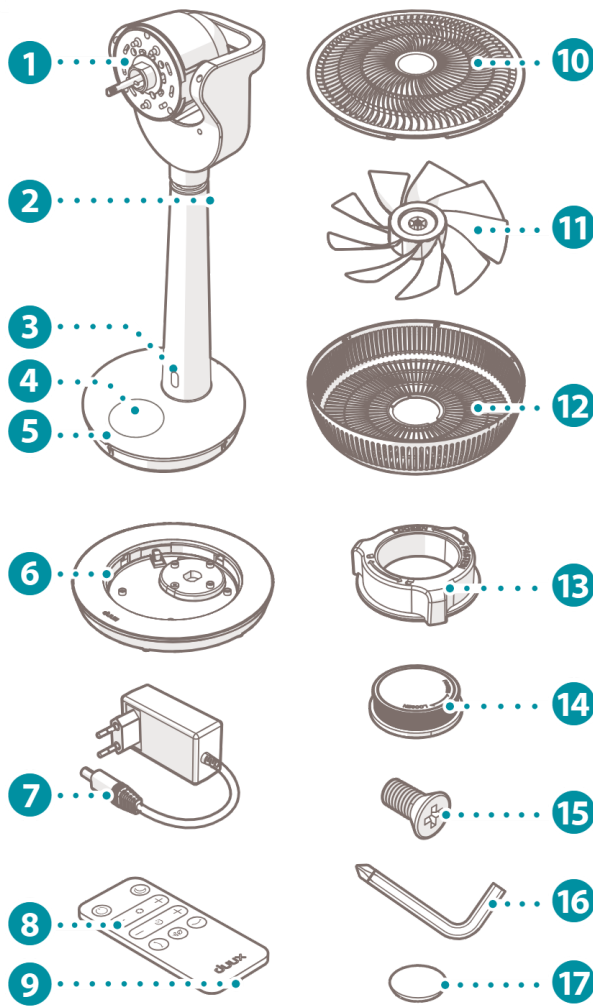
3.2. Product description

The Whisper 3 is a cooling fan to cool your room.

The product has different air-cooling functions which provide the user with multiple possibilities suited for their needs.

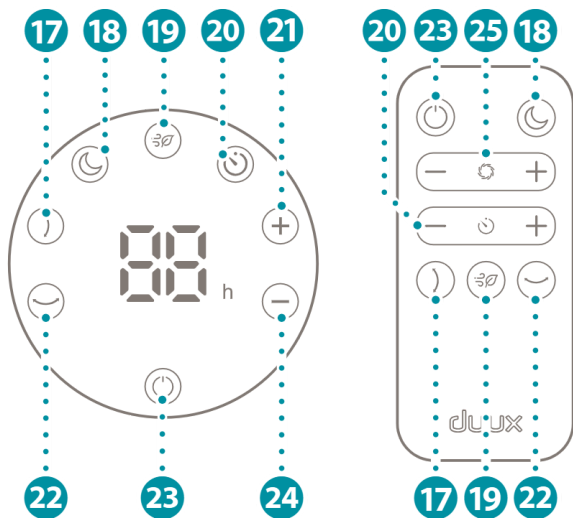
Choose from 26 speed settings with or without oscillation or choose the pre-set natural wind mode to simulate natural wind conditions.

3.3. Main parts



- 1 Motor unit
- 2 Height adjustment button
- 3 Infrared sensor
- 4 Display
- 5 Base unit
- 6 Power adapter
- 7 Remote control
- 8 Battery compartment
- 9 Front grill
- 10 Fan blade
- 11 Rear grill
- 12 Locking ring (2x)
- 13 Fan blade knob
- 14 Screw (M3 x 8 mm)
- 15 Angle screwdriver
- 16 Cell battery

3.4. Controls





- 17 Vertical oscillation
- 18 Night mode
- 19 Natural wind mode
- 20 Timer
- 21 Increase
- 22 Horizontal oscillation
- 23 Power/stand-by
- 24 Decrease
- 25 Regular wind mode

4. Safety instructions

4.1. Signal words in this manual

Signal words provide information on the level of risk of the described hazardous situation.






The following signal words are used in this manual:

Symbol	Meaning
 WARNING	This symbol indicates a hazardous situation which, if not avoided, could result in death or serious injury.
 CAUTION	This symbol indicates a hazardous situation which, if not avoided, could result in minor or moderate injury.
NOTICE	This symbol is used to address practices not related to physical injury.

4.2. Symbols on the product

Symbols on the product provide information about the product.

The following symbols can be found on the product:

Symbol	Meaning
	The product features CE marking to demonstrate conformity to all relevant European directives.
	The product features UKCA marking to demonstrate conformity to all relevant United Kingdom directives.
	The European directive 2012/19/CE on Waste Electrical and Electronic Equipment (WEEE) requires that old household electrical appliances must not be disposed in the normal unsorted municipal waste stream.
	Only use detachable power adapter: KT241120200EU / CZH024N120200EUWQ (EU plug) KT241120200BS / CZH024N120200BSWQ (UK plug)
	Make sure you have fully read and understood the instructions in this document before installing or using the product.

4.3. Safety warnings and regulations

⚠ WARNING

Risk of electric shock:

- Never perform any maintenance with the power cable connected to a power outlet. Disconnect the power cable from the power outlet before service and when cleaning the product.
- Never open the product yourself for maintenance. This product may only be opened for maintenance by an authorised technician.
- Never immerse the product in water or other liquids. Follow the cleaning instructions of this manual for the correct performance of maintenance.
- Never handle the product with wet hands.
- Never use the product in a humid environment. Always use the product in a clean and dry environment.
- Never use the product in the immediate surroundings of a bath, a shower, or a swimming pool.

Risk of fire:

- Never use the product with a programmer, timer, separate remote-control system, or any other device that switches the product on automatically.
- Never use the product if there are visible signs of damage to the product. Return a damaged product to the nearest authorised service point for examination, repair, or adjustment.
- Never cut, refit, excessively distort, pull, twist, or crush the power adapter.
- Never cover the product. Objects may block openings. Keep the space around the product free from objects.
- Never use an extension cord. Only use the product on a direct power source.
- Never let the product or power adapter become dusty. Regularly clean the product and power adapter from dust.
- Never use sockets that do not match the power voltage of the product. Before using the product, check the voltage on rating plate of the product. Only connect the product to sockets that match the voltage of the product.
- Never pull the power adapter to disconnect it from the power outlet. Always grasp the plug and pull.
- Always remove the power adapter from the power outlet when the product is not used for a longer period of time.

Risk of chemical burns:

- Always keep battery(s), both full and empty, out of reach of children to avoid the chance of swallowing. Dispose used battery(s) immediately and safely. Seek immediate medical attention when you suspect that battery(s) have been swallowed.
- Always avoid eye or skin contact with the battery acid in event of a leaking battery. In case of contact with the battery acid, immediately flush the eyes or skin with water. Consult a doctor immediately.

Risk of explosion:

- Never use the product near flammable or explosive substances or fuels. Flammable or explosive substances or fuels may cause an explosion. Only use the product in a clean and well-ventilated area.
- Never expose battery(s) to heat, fire, or direct sunlight.

Risk of cutting:

- Never use the product when the guard is removed or damaged.
- Always keep hands, fingers, hair, clothing, or jewellery away from the product during use.
- Never let children alone unattended with the product in use to ensure that they do not play with the product. Always supervise children when the product is in use.

Risk of suffocation:

- Never let children play with the packaging material. Keep the packaging material out of the reach of children.

⚠ CAUTION**Risk of snagging:**

- Always use the product in an upright position on a stable and flat surface. Keep a minimum of 50 cm free space around the product.

Risk of falling:

- Never let the power adapter hang over the edge of a table or counter. Someone could trip over the cord or accidentally pull the cord. Always place the power adapter on a stable and flat surface.

Risk of air-drying:

- Never place the air outlet of the product directly facing animals or plants.

NOTICE**Risk of short-circuiting:**

- Always match the plus (+) and minus (-) markings on the battery with the plus (+) and minus (-) markings on the product when inserting the battery(s).
- Never mix cells of different manufacture, capacity, size or type within the product.
- Always remove the battery(s) from the product when the product is not used for a longer period of time.
- Always use the recommended battery type(s).

Risk of damaging the product:

- Never use any paint, cleaning sprays, anti-insect sprays, or similar near the product when the product is switched on.
- Never use the product in direct sunlight. Direct sunlight may damage the housing of the product.
- Never pull the power cord to disconnect it from the socket. Always grasp the plug and pull.
- Never use cleaning solvents or abrasives to clean the product. Using the wrong cleaning products may damage the housing of the product. Always use the correct cleaning method specified in this user manual.
- Always remove all the packaging before installing or using the product.
- Never mount the product on walls or ceilings

Risk of noise distortion:

- Always keep the product at a minimum distance of 1 meter away from communication devices.

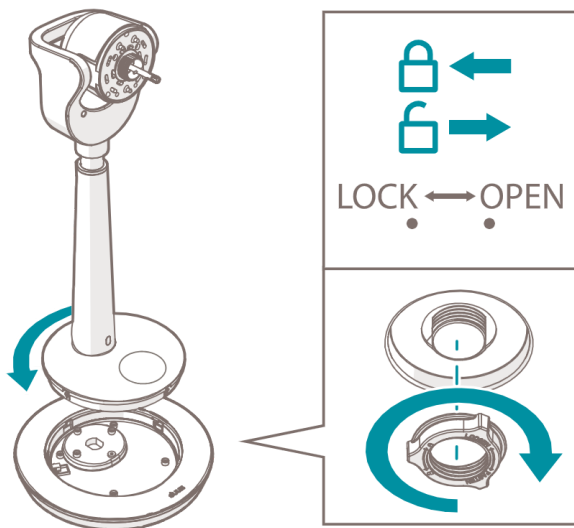
5. Installation

NOTICE

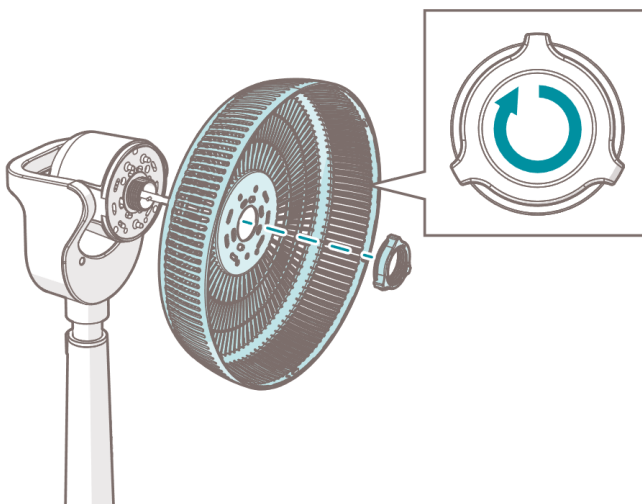
Risk of damaging the product:

- Always remove all the packaging before installing or using the product.

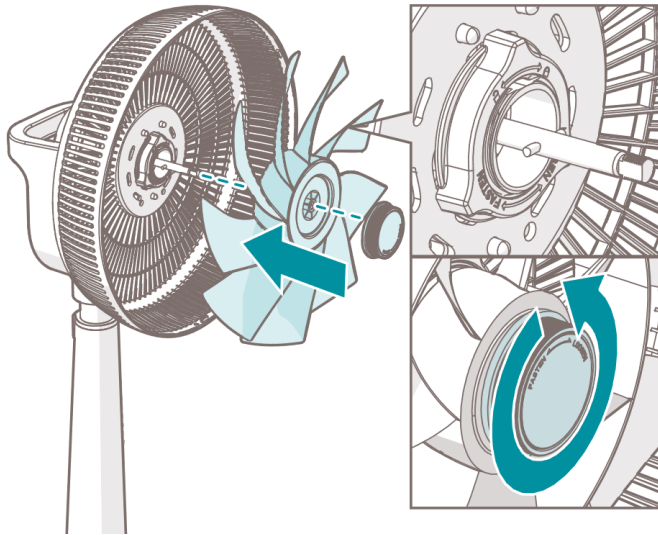
5.1. Installing the product



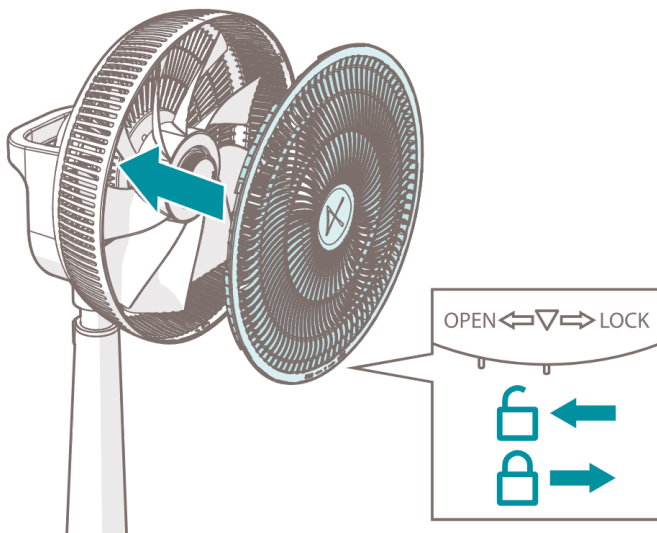
1. Place the motor unit **1** on the base unit **5**.
2. Rotate the motor unit **1** counterclockwise to lock in place.
3. Secure the motor unit **1** to on the bottom of the base unit **5** with the locking ring **12**.



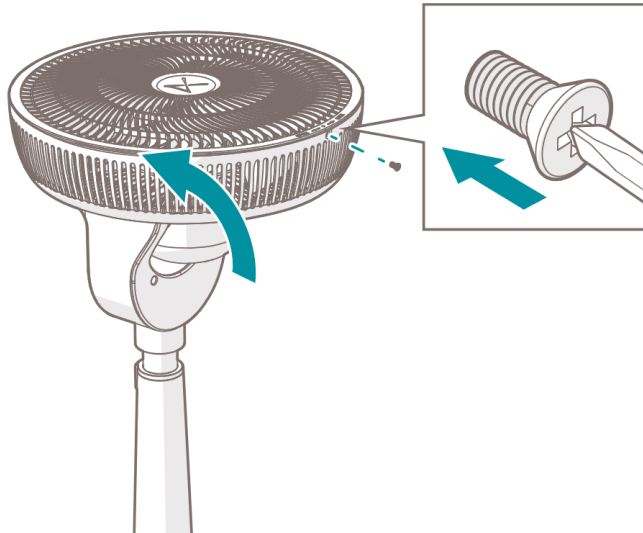
4. Place the rear grill 11 onto the motor unit 1.
5. Secure the rear grill 11 with the locking ring 12. Rotate the locking ring 12 clockwise.



6. Place the fan blade 10 on the motor unit 1.
7. Secure the fan blade 10 with the fan blade knob 13. Rotate the fan blade knob 10 counterclockwise.



8. Place the front grill 9 on the rear grill 11.
9. Align the triangle on the front grill 9 with the right-mark on the rear grill 11.
10. Rotate the front grill 9 counterclockwise until the triangle aligns with the left-mark on the rear grill 11.



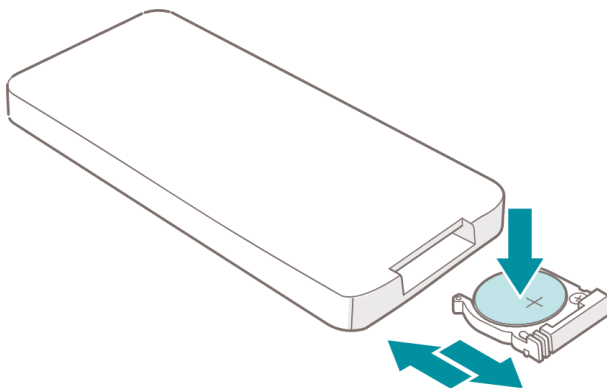
11. Hinge the top part of the product backwards.

12. Secure the front grill **9** with the screw **14** using the angle screwdriver **15**.

5.2. Installing the remote control

Risk of short-circuiting:

- Always match the plus (+) and minus (-) markings on the battery with the plus (+) and minus (-) markings on the product when inserting the battery(s).



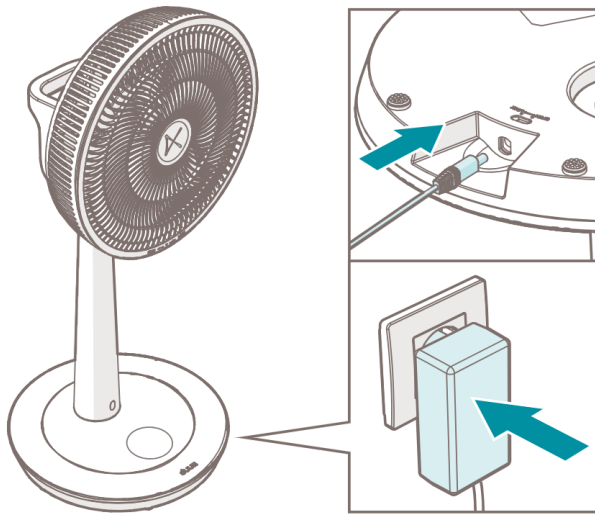
1. Open the battery compartment **8**.

2. Insert the cell battery **16**.

3. Close the battery compartment **8**.

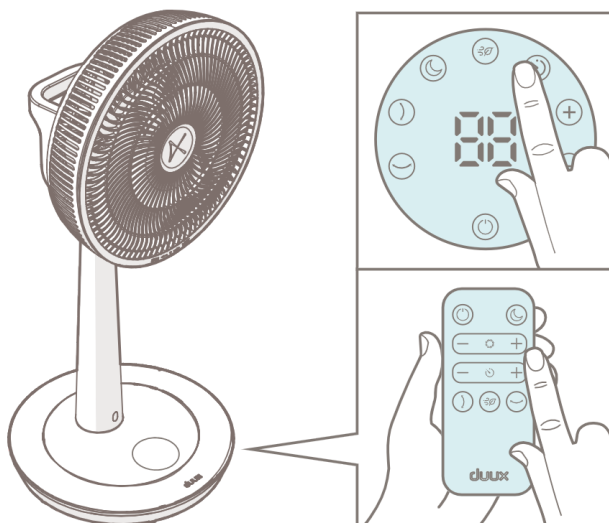
6. Use

6.1. Switching on the product



1. Connect the end of the power adapter **6** to the base unit **5**.
2. Connect the other end of the power adapter **6** to a power outlet.







6.2. Using the product



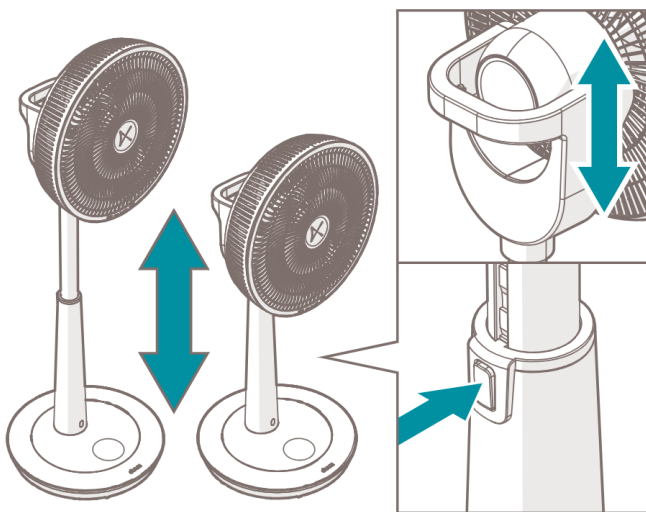
1. Place the product upright on a stable and flat surface, at least 50 cm from other objects.

The product resumes the selected function or mode from previous use.

3. Press on the buttons on the control panel or remote control to select the desired function or mode. Be sure to aim the remote control at the base of the product.


Icon	Function/mode	Description
	Standby mode	The product is in standby mode.
	Horizontal oscillation	The product oscillates horizontally.
	Vertical oscillation	The product oscillates vertically.
	Timer function	The product automatically switches off after the set time has passed.
	Night mode	Press the night mode button XREF to activate/deactivate night mode. The control panel is at half of the brightness. Sound signals are disabled.
	Natural wind mode	The product produces variable wind speeds.

6.3. Adjusting the product height



Press the and hold the height adjustment button **2** and push the handle of the motor unit **1** down to

6.4. Switching off the product

1. Press the power button XREF to switch off the product.
2. Remove the power adapter  from the power outlet.

7. Maintenance

⚠ WARNING

Risk of electric shock:

- Never perform any maintenance with the product connected to the power source. Disconnect the product from the power source before service and when cleaning the product.
- Never immerse the product in water or other liquids. Follow the cleaning instructions of this manual for the correct performance of maintenance.

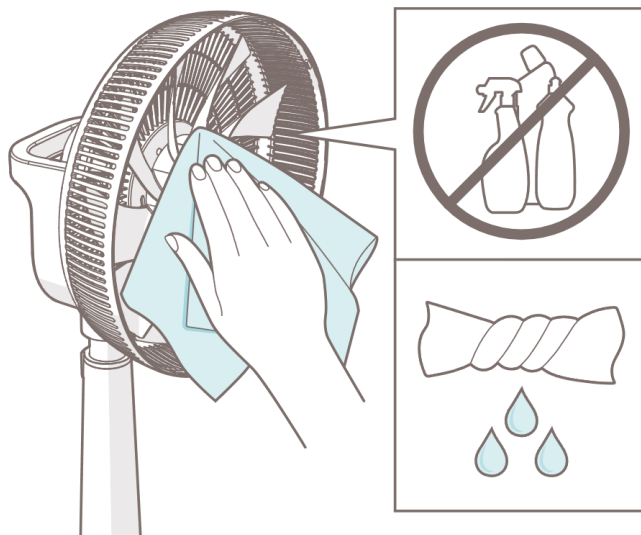
NOTICE

Risk of damaging the product:

- Never use cleaning solvents or abrasives to clean the product. Using the wrong cleaning products may damage the housing of the product. Always use the correct cleaning method specified in this user manual.

7.1. Cleaning

Clean the product every 3 months.



1. Remove the screw 14 from the front grill 9 using the angle screwdriver 15.
2. Rotate the front grill 9 clockwise to remove the front grill 9.
3. Rotate the fan blade knob 13 clockwise to remove the fan blade knob 13.
4. Remove the fan blade 10 from the motor unit 1.
5. Clean the fan blade and the outside of the product with a soft, slightly damp cloth.
6. Reassemble the product.

7.2. Storing

When the product is not used for multiple months, clean all the parts.

Remove the cell battery  from the remote control .

Store the product in the original packaging and keep in a clean, dry place.

7.3. Spare parts

WARNING

Risk of electric shock:

- Never open the product yourself for maintenance. This product may only be opened for maintenance by an authorised technician.
- Never perform any maintenance with the product connected to the power source. Disconnect the product from the power source before service and when cleaning the product.

Spare parts and accessories can be requested at a local distributor.

8. Warranty

Duux products have a 24-month guarantee from the time of purchase, provided that they are installed and maintained correctly as indicated in this user manual. Warranty will be void if the product has been improperly operated, stored or used other than described in this manual. This includes opening the device and water damage.

Claims under the guarantee must always be made via the supplier of your Duux product. Products with a defect caused by the production process and within the guarantee period after purchase will be assessed by Duux.

If you notice a defect, please first consult the user manual and the online FAQ at www.duux.com.

9. Disposal

If the product is defective, please contact your supplier. It may still be possible to repair the product. If you still need to dispose the product, please follow the local regulations.

To prevent possible harm to the environment or human health from uncontrolled waste disposal, recycle the product responsibly to promote the sustainable reuse of material resources.

10. Technical specifications



Product name

Whisper 3



Model number

DXCF220/221/222/223



Measurements (d × w × h)

Ø 340 × 950 mm



Weight

3.8 kg



Main materials

ABS, PP



Input power

12 V = 2 A



Power consumption

19 W



Standby power consumption

0.5 W



Battery type remote control

CR2025



Noise level

13 – 56 dB



Speed settings

26

**Maximum fan flow rate/service value**1750 m³/h**Maximum air velocity**

4.7 m/s

**Measurement standard for service value**

21.5 °C

35% humidity

**Adjustable height**

73 - 95 cm

**Display**

Digital LCD display